



Datasheet for ABIN6739467
anti-B4GALNT3 antibody (AA 252-301)



[Go to Product page](#)

1 Image

Overview

| | |
|----------------------|---|
| Quantity: | 100 µL |
| Target: | B4GALNT3 |
| Binding Specificity: | AA 252-301 |
| Reactivity: | Human, Mouse, Dog, Bat, Monkey |
| Host: | Rabbit |
| Clonality: | Polyclonal |
| Conjugate: | This B4GALNT3 antibody is un-conjugated |
| Application: | Western Blotting (WB) |

Product Details

| | |
|-----------------------|--|
| Immunogen: | Synthetic peptide located between aa252-301 of human B4GALNT3 (Q6L9W6, NP_775864). Percent identity by BLAST analysis: Human, Chimpanzee, Gorilla, Monkey, Marmoset, Mouse, Dog, Bat (100%), Rat, Elephant, Bovine, Rabbit, Horse (92%), Opossum (91%), Gibbon (85%). Type of Immunogen: Synthetic peptide |
| Isotype: | IgG |
| Specificity: | Human B4GALNT3 |
| Predicted Reactivity: | Percent identity by BLAST analysis: Human, Mouse, Dog (100%) Rat, Rabbit, Horse, Bovine (92%). |
| Purification: | Immunoaffinity purified |

Target Details

Target: B4GALNT3

Alternative Name: B4GALNT3 ([B4GALNT3 Products](#))

Background: Name/Gene ID: B4GALNT3

Synonyms: B4GALNT3, Beta4GalNAcT3, Beta4GalNAc-T3, B4GalNac-T3, NGalNAc-T2

Gene ID: 283358

NCBI Accession: [NP_775864](#)

UniProt: [Q6L9W6](#)

Application Details

Application Notes: Approved: WB

Usage: ELISA titer using peptide based assay: 1:62500. Western Blot: Suggested dilution at 1 μ g/mL in 5 % skim milk / PBS buffer, and HRP conjugated anti-Rabbit IgG should be diluted in 1:50000 - 100000 as second antibody.

Comment: Target Species of Antibody: Human

Restrictions: For Research Use only

Handling

Format: Lyophilized

Reconstitution: Distilled Water.

Concentration: Lot specific

Buffer: Lyophilized from PBS with 2 % sucrose

Handling Advice: Avoid repeat freeze-thaw cycles.

Storage: 4 °C, -20 °C

Storage Comment: Long term: -20°C, the use of 50% glycerol is recommended if storing aliquots in -20°C for long term use (up to 1 year)

Short term (less than 1 week): 4°C. Avoid freeze-thaw cycles.

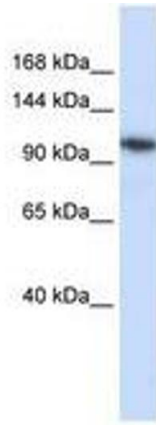


Image 1.