



[Go to Product page](#)

Datasheet for ABIN6739469
anti-GALNT13 antibody (AA 31-80)

1 Image

Overview

Quantity:	100 µL
Target:	GALNT13
Binding Specificity:	AA 31-80
Reactivity:	Human, Rat, Mouse, Rabbit, Cow, Dog, Horse, Chicken, Monkey
Host:	Rabbit
Clonality:	Polyclonal
Conjugate:	This GALNT13 antibody is un-conjugated
Application:	Western Blotting (WB)

Product Details

Immunogen:	Synthetic peptide located between aa31-80 of human GALNT13 (Q8IUC8, NP_443149). Percent identity by BLAST analysis: Human, Chimpanzee, Gorilla, Gibbon, Marmoset, Mouse, Rat, Elephant, Dog, Bovine, Rabbit, Horse, Turkey, Chicken (100%), Platypus (91%), Xenopus, Stickleback (85%). Type of Immunogen: Synthetic peptide
Isotype:	IgG
Specificity:	Human GALNT13
Predicted Reactivity:	Percent identity by BLAST analysis: Human, Mouse, Rabbit, Horse, Dog, Bovine, Chicken (100%) Xenopus (85%).
Purification:	Immunoaffinity purified

Target Details

Target:	GALNT13
Alternative Name:	GALNT13 (GALNT13 Products)
Background:	Name/Gene ID: GALNT13 Synonyms: GALNT13, GalNAc transferase 13, GalNAc-T13, KIAA1918, Pp-GaNTase 13, H_NH0187G20.1, WUGSC:H_NH0187G20.1
Gene ID:	114805
NCBI Accession:	NP_443149
UniProt:	Q8IUC8

Application Details

Application Notes:	Approved: WB Usage: ELISA titer using peptide based assay: 1:1562500. Western Blot: Suggested dilution at 1 µg/mL in 5 % skim milk / PBS buffer, and HRP conjugated anti-Rabbit IgG should be diluted in 1:50000 - 100000 as second antibody.
Comment:	Target Species of Antibody: Human
Restrictions:	For Research Use only

Handling

Format:	Lyophilized
Reconstitution:	Distilled Water.
Concentration:	Lot specific
Buffer:	Lyophilized from PBS with 2 % sucrose
Handling Advice:	Avoid repeat freeze-thaw cycles.
Storage:	4 °C,-20 °C
Storage Comment:	Long term: -20°C, the use of 50% glycerol is recommended if storing aliquots in -20°C for long term use (up to 1 year) Short term (less than 1 week): 4°C. Avoid freeze-thaw cycles.

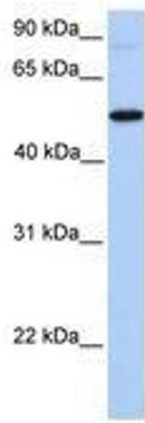


Image 1.