



Datasheet for ABIN6739480  
**anti-GCOM1 antibody (AA 307-356)**



[Go to Product page](#)

1 Image

Overview

Quantity:	100 µL
Target:	GCOM1
Binding Specificity:	AA 307-356
Reactivity:	Human, Rat, Dog, Horse, Rabbit, Guinea Pig, Pig, Xenopus laevis
Host:	Rabbit
Clonality:	Polyclonal
Conjugate:	This GCOM1 antibody is un-conjugated
Application:	Western Blotting (WB)

Product Details

Immunogen:	Synthetic peptide located between aa307-356 of human Gcom1 (Q6EES4, NP_001018101). Percent identity by BLAST analysis: Human, Chimpanzee, Gorilla, Gibbon, Galago, Rat, Dog, Rabbit, Horse, Pig, Opossum, Guinea pig, Xenopus (100%), Mouse, Hamster, Bovine (92%), Elephant, Panda, Bat (85%).  Type of Immunogen: Synthetic peptide
Isotype:	IgG
Specificity:	Human GCOM1
Predicted Reactivity:	Percent identity by BLAST analysis: Human, Rabbit, Horse, Pig, Dog, Guinea pig (100%) Mouse, Bovine (92%) Rat (85%).
Purification:	Immunoaffinity purified

## Target Details

---

Target: GCOM1

Alternative Name: GCOM1 ([GCOM1 Products](#))

Background: Name/Gene ID: GCOM1

Synonyms: GCOM1, Gcom, Gcom2, GRINL1A, MYZAP-POLR2M

NCBI Accession: [NP\\_001018101](#)

## Application Details

---

Application Notes: Approved: WB

Usage: ELISA titer using peptide based assay: 1:62500. Western Blot: Suggested dilution at 1  $\mu$ g/mL in 5 % skim milk / PBS buffer, and HRP conjugated anti-Rabbit IgG should be diluted in 1:50000 - 100000 as second antibody.

Comment: Target Species of Antibody: Human

Restrictions: For Research Use only

## Handling

---

Format: Lyophilized

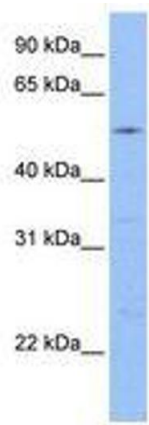
Reconstitution: Distilled Water.

Concentration: Lot specific

Buffer: Lyophilized from PBS with 2 % sucrose

Storage: 4 °C, -20 °C

Storage Comment: Long term: -20°C, the use of 50% glycerol is recommended if storing aliquots in -20°C for long term use (up to 1 year)  
Short term (less than 1 week): 4°C. Avoid freeze-thaw cycles.



**Image 1.**