

Datasheet for ABIN6739486
anti-MTO1 antibody (AA 182-231)



[Go to Product page](#)

1 Image

Overview

Quantity:	100 µL
Target:	MTO1
Binding Specificity:	AA 182-231
Reactivity:	Human, Pig, Chicken
Host:	Rabbit
Clonality:	Polyclonal
Conjugate:	This MTO1 antibody is un-conjugated
Application:	Western Blotting (WB)

Product Details

Immunogen:	Synthetic peptide located between aa182-231 of human MTO1 (Q9Y2Z2, NP_001116698). Percent identity by BLAST analysis: Human, Chimpanzee, Orangutan, Gibbon, Shrew, Panda, Pig, Turkey, Chicken (100%), Baboon, Monkey, Galago, Marmoset, Mouse, Dog, Bovine, Bat, Rabbit, Horse, Guinea pig, Armadillo, Platypus (92%), Elephant (85%). Type of Immunogen: Synthetic peptide
Isotype:	IgG
Specificity:	Human MTO1
Predicted Reactivity:	Percent identity by BLAST analysis: Human, Chicken (100%) Mouse, Rabbit, Horse, Dog, Bovine, Guinea pig (92%).
Purification:	Immunoaffinity purified

Target Details

Target: MTO1

Abstract: [MTO1 Products](#)

Background: Name/Gene ID: MTO1

Synonyms: MTO1, COXPD10, CGI-02, Homolog of yeast Mto1, Mitochondrial MTO1-3

Gene ID: 25821

NCBI Accession: [NP_001116698](#)

UniProt: [Q9Y2Z2](#)

Application Details

Application Notes: Approved: WB

Usage: ELISA titer using peptide based assay: 1:62500. Western Blot: Suggested dilution at 1 μ g/mL in 5 % skim milk / PBS buffer, and HRP conjugated anti-Rabbit IgG should be diluted in 1:50000 - 100000 as second antibody.

Comment: Target Species of Antibody: Human

Restrictions: For Research Use only

Handling

Format: Lyophilized

Reconstitution: Distilled Water.

Concentration: Lot specific

Buffer: Lyophilized from PBS with 2 % sucrose

Handling Advice: Avoid repeat freeze-thaw cycles.

Storage: 4 °C, -20 °C

Storage Comment: Long term: -20°C, the use of 50% glycerol is recommended if storing aliquots in -20°C for long term use (up to 1 year)

Short term (less than 1 week): 4°C. Avoid freeze-thaw cycles.

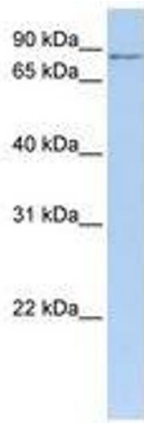


Image 1.