

Datasheet for ABIN6739671  
**anti-PEDF antibody (N-Term)**

## 2 Images

[Go to Product page](#)

## Overview

Quantity:	100 µL
Target:	PEDF (SERPINF1)
Binding Specificity:	N-Term
Reactivity:	Human, Mouse, Rat, Pig, Dog, Guinea Pig, Horse, Sheep, Bat
Host:	Rabbit
Clonality:	Polyclonal
Conjugate:	This PEDF antibody is un-conjugated
Application:	Western Blotting (WB), Immunohistochemistry (IHC), Immunohistochemistry (Paraffin-embedded Sections) (IHC (p))

## Product Details

Brand:	IHC-plus™
Immunogen:	Synthetic peptide from N-Terminus of human SERPINF1 (P36955, NP_002606). Percent identity by BLAST analysis: Human, Chimpanzee, Gorilla, Bat (100%), Gibbon (93%), Galago (92%), Marmoset, Mouse, Sheep, Bovine (86%), Opossum, Platypus (81%), Elephant, Horse, Pig, Guinea pig (80%), Rat (75%).  Type of Immunogen: Synthetic peptide
Isotype:	IgG
Specificity:	Human SERPINF1 / PEDF
Predicted Reactivity:	Percent identity by BLAST analysis: Human (100%) Mouse, Sheep (86%) Horse, Pig, Guinea pig

## Product Details

(80%).

Purification: Immunoaffinity purified

## Target Details

Target: PEDF (SERPINF1)

Alternative Name: SERPINF1 / PEDF ([SERPINF1 Products](#))

Background: Name/Gene ID: SERPINF1

Synonyms: SERPINF1, EPC-1, OI12, PEDF, Serpin F1, PIG35, OI6

Gene ID: 5176

NCBI Accession: [NP\\_002606](#)

UniProt: [P36955](#)

## Application Details

Application Notes: Approved: IHC, IHC-P (4 - 8 µg/mL), WB (0.2 - 1 µg/mL)

Usage: Immunohistochemistry: This antibody was validated for use in immunohistochemistry on a panel of 21 formalin-fixed, paraffin-embedded (FFPE) human tissues after heat induced antigen retrieval in pH 6.0 citrate buffer. After incubation with the primary antibody, slides were incubated with biotinylated secondary antibody, followed by alkaline phosphatase-streptavidin and chromogen. The stained slides were evaluated by a pathologist to confirm staining specificity. The optimal working concentration for this antibody was determined to be 4-8 µg/mL.

Comment: Target Species of Antibody: Human

Restrictions: For Research Use only

## Handling

Format: Lyophilized

Reconstitution: Reconstitute with 50 µL sterile ddH2O.

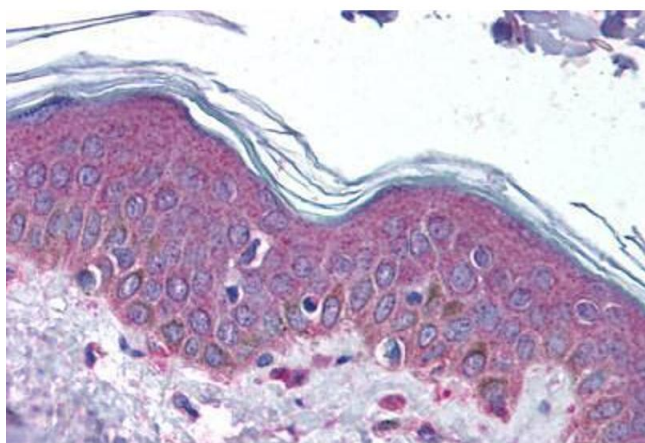
Concentration: Lot specific

Buffer: Lyophilized from PBS buffer with 2 % sucrose

## Handling

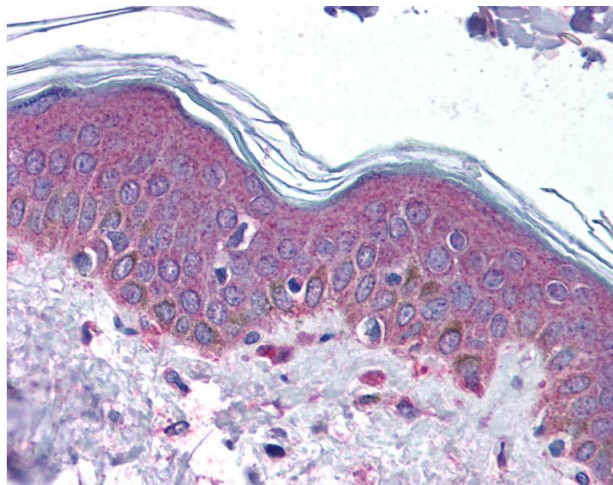
Handling Advice:	Avoid repeated freezing and thawing.
Storage:	4 °C,-20 °C
Storage Comment:	Long term: -20°C, the use of 50% glycerol is recommended if storing aliquots in -20°C for long term use (up to 1 year) Short term (less than 1 week): 4°C. Avoid freeze-thaw cycles.

## Images



### Immunohistochemistry (Paraffin-embedded Sections)

**Image 1.** Human Skin (formalin-fixed, paraffin-embedded) stained with SERPINF1 antibody ABIN337231 at 4-8 ug/ml followed by biotinylated goat anti-rabbit IgG secondary antibody ABIN481713, alkaline phosphatase-streptavidin and chromogen.



### Immunohistochemistry

**Image 2.** Anti-PEDF antibody IHC of human skin. Immunohistochemistry of formalin-fixed, paraffin-embedded tissue after heat-induced antigen retrieval. Antibody concentration 8 ug/ml. This image was taken for the unconjugated form of this product. Other forms ...