



[Go to Product page](#)

Datasheet for ABIN6739680
anti-IL-22 antibody (AA 40-67)

1 Image

Overview

Quantity:	200 µg
Target:	IL-22 (IL22)
Binding Specificity:	AA 40-67
Reactivity:	Mouse
Host:	Rabbit
Clonality:	Polyclonal
Conjugate:	This IL-22 antibody is un-conjugated
Application:	ELISA, Immunohistochemistry (IHC)

Product Details

Immunogen:	Synthetic peptide CKLEVSNFQQPYIVNRTFMLAKEASLAD corresponding to N-terminus of mouse IL-22. Percent identity by BLAST analysis: Mouse (100%), Rat (93%), Human, Gorilla, Marmoset, Dog (86%), Gibbon, Monkey, Porcine (82%). Type of Immunogen: Synthetic peptide
Specificity:	This antibody recognizes mouse IL-22 and was not tested for reactivity to human IL-22.
Predicted Reactivity:	Percent identity by BLAST analysis: Mouse (100%) Rat (93%) Human, Gorilla, Marmoset, Dog (86%) Gibbon, Monkey, Porcine (82%).
Purification:	Immunoaffinity purified

Target Details

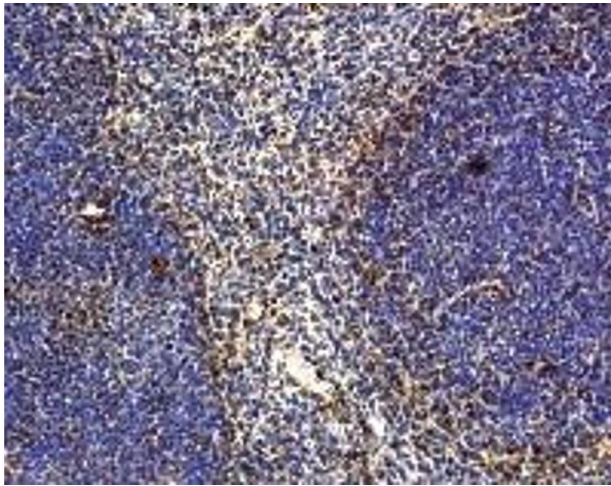
Target:	IL-22 (IL22)
Alternative Name:	IL22 (IL22 Products)
Background:	Name/Gene ID: IL22 Family: Interleukin Synonyms: IL22, Cytokine Zcyto18, ILTIF, Interleukin 22, IL-22, IL-D110, TIFIL-23, Zcyto18, IL-TIF, Interleukin-22
Gene ID:	50616
UniProt:	Q9GZX6

Application Details

Application Notes:	Approved: ELISA (1:100000), IHC Not recommended for: IHC-P
Comment:	Target Species of Antibody: Mouse
Restrictions:	For Research Use only

Handling

Format:	Liquid
Concentration:	Lot specific
Buffer:	10 mM KHPO4, 140 mM NaCl, 0.1 % sodium azide
Preservative:	Sodium azide
Precaution of Use:	This product contains Sodium azide: a POISONOUS AND HAZARDOUS SUBSTANCE which should be handled by trained staff only.
Handling Advice:	Aliquot to Avoid freeze/thaw cycles. Store undiluted.
Storage:	-20 °C
Storage Comment:	Store at -20°C. Aliquot to avoid freeze-thaw cycles. Store undiluted.



Immunohistochemistry

Image 1.