

Datasheet for ABIN6740270
anti-FOXG1 antibody (AA 71-120)[Go to Product page](#)

1 Image

Overview

Quantity:	100 µL
Target:	FOXG1
Binding Specificity:	AA 71-120
Reactivity:	Human, Mouse, Rat, Monkey
Host:	Rabbit
Clonality:	Polyclonal
Conjugate:	This FOXG1 antibody is un-conjugated
Application:	Western Blotting (WB)

Product Details

Immunogen:	Synthetic peptide located between aa71-120 of human FOXG1 (P55316, NP_005240). Percent identity by BLAST analysis: Human, Chimpanzee, Gibbon, Monkey, Marmoset, Mouse, Rat (100%). Type of Immunogen: Synthetic peptide
Isotype:	IgG
Specificity:	Human FOXG1
Predicted Reactivity:	Percent identity by BLAST analysis: Human, Mouse, Rat (100%).
Purification:	Immunoaffinity purified

Target Details

Target:	FOXG1
Alternative Name:	BF1 / FOXG1 (FOXG1 Products)
Background:	<p>Name/Gene ID: FOXG1</p> <p>Family: Transcription factor</p> <p>Synonyms: FOXG1, BF1, BF2, Brain factor 1, BF-2, FKHL1, FKHL2, Forkhead box G1A, Forkhead box protein G1, Forkhead box protein G1A, Forkhead-related protein FKHL1, Forkhead-related protein FKHL2, FOXG1A, FOXG1B, FOXG1C, Forkhead box protein G1B, Forkhead-like 2, Forkhead-like 4, HBF2, HBF-1, HFK1, FKH2, FKHL3, FKHL4, Forkhead box G1, Forkhead box G1B, Forkhead box G1C, Forkhead-like 1, Forkhead-related protein FKHL3, HBF-3, HBF-G2, HFK3, Transcription factor bf-2, Oncogene QIN, QIN, BF-1, Brain factor 2, FHKL3, Forkhead box protein G1C, Forkhead-like 3, HBF-2, HFK2, KHL2</p>
Gene ID:	2290
NCBI Accession:	NP_005240
UniProt:	P55316

Application Details

Application Notes:	<p>Approved: WB (0.2 - 1 µg/mL)</p> <p>Usage: Western Blot: Suggested dilution at 1 µg/mL in 5 % skim milk / PBS buffer, and HRP conjugated anti-Rabbit IgG should be diluted in 1: 50,000 - 100,000 as second antibody. ELISA titer in peptide based assay: 1:62500.</p> <p>Not recommended for: IHC-P</p>
Comment:	Target Species of Antibody: Human
Restrictions:	For Research Use only

Handling

Format:	Lyophilized
Reconstitution:	Distilled water
Concentration:	Lot specific

Handling

Buffer:	Lyophilized from PBS with 2 % sucrose
Handling Advice:	Avoid repeat freeze-thaw cycles.
Storage:	4 °C,-20 °C
Storage Comment:	Long term: -20°C, the use of 50% glycerol is recommended if storing aliquots in -20°C for long term use (up to 1 year) Short term (less than 1 week): 4°C. Avoid freeze-thaw cycles.

Images

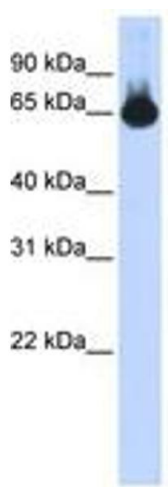


Image 1.