

Datasheet for ABIN6740287
anti-OR13C9 antibody (AA 72-121)[Go to Product page](#)

1 Image

Overview

Quantity:	100 µL
Target:	OR13C9
Binding Specificity:	AA 72-121
Reactivity:	Human, Rat, Dog, Horse, Pig, Monkey, Mouse
Host:	Rabbit
Clonality:	Polyclonal
Conjugate:	This OR13C9 antibody is un-conjugated
Application:	Western Blotting (WB)

Product Details

Immunogen:	Synthetic peptide located between aa72-121 of human OR13C5 (Q8NGT0, NP_001004482). Percent identity by BLAST analysis: Human, Gorilla, Gibbon, Monkey, Marmoset, Elephant, Panda, Dog, Horse, Pig, Opossum (100%), Mouse, Rat (84%). Type of Immunogen: Synthetic peptide
Isotype:	IgG
Specificity:	Human OR13C9
Predicted Reactivity:	Percent identity by BLAST analysis: Human, Dog (100%) Mouse, Rat (83%).
Purification:	Immunoaffinity purified

Target Details

Target:	OR13C9
Alternative Name:	OR13C9 (OR13C9 Products)
Background:	Name/Gene ID: OR13C9 Subfamily: Olfactory Family: GPCR Synonyms: OR13C9, Olfactory receptor OR9-13, Olfactory receptor 13C9, OR9-13, OR37L
Gene ID:	286362
NCBI Accession:	NP_001004482
UniProt:	Q8NGT0

Application Details

Application Notes:	Approved: WB (0.2 - 1 µg/mL) Usage: Western Blot: Suggested dilution at 1 µg/mL in 5 % skim milk / PBS buffer, and HRP conjugated anti-Rabbit IgG should be diluted in 1: 50,000 - 100,000 as second antibody. ELISA titer in peptide based assay: 1:312500.
Comment:	Target Species of Antibody: Human
Restrictions:	For Research Use only

Handling

Format:	Lyophilized
Reconstitution:	Distilled water
Concentration:	Lot specific
Buffer:	Lyophilized from PBS with 2 % sucrose
Handling Advice:	Avoid repeat freeze-thaw cycles.
Storage:	4 °C, -20 °C
Storage Comment:	Long term: -20°C, the use of 50% glycerol is recommended if storing aliquots in -20°C for long term use (up to 1 year) Short term (less than 1 week): 4°C. Avoid freeze-thaw cycles.

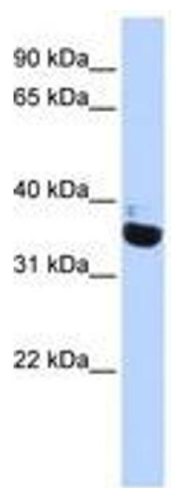


Image 1.