



Datasheet for ABIN6740295
anti-PITX1 antibody (AA 36-85)



[Go to Product page](#)

1 Image

Overview

Quantity:	100 µL
Target:	PITX1
Binding Specificity:	AA 36-85
Reactivity:	Human, Rat, Mouse, Cow, Guinea Pig, Dog, Pig, Monkey
Host:	Rabbit
Clonality:	Polyclonal
Conjugate:	This PITX1 antibody is un-conjugated
Application:	Western Blotting (WB)

Product Details

Immunogen:	Synthetic peptide located between aa36-85 of human PITX1 (P78337, NP_002644). Percent identity by BLAST analysis: Human, Chimpanzee, Gorilla, Gibbon, Marmoset, Mouse, Rat, Elephant, Dog, Bovine, Pig, Guinea pig (100%), Galago, Bat, Opossum (92%), Monkey (85%). Type of Immunogen: Synthetic peptide
Isotype:	IgG
Specificity:	Human PITX1
Predicted Reactivity:	Percent identity by BLAST analysis: Human, Mouse, Rat, Dog, Bovine, Pig, Guinea pig (100%).
Purification:	Immunoaffinity purified

Target Details

Target:	PITX1
Alternative Name:	PITX1 (PITX1 Products)
Background:	Name/Gene ID: PITX1 Synonyms: PITX1, BFT, Homeobox protein PITX1, LBNBG, Paired-like homeodomain 1, Pituitary otx-related factor, Pituitary homeo box 1, Pituitary homeobox 1, CCF, POTX, PTX1
Gene ID:	5307
NCBI Accession:	NP_002644
UniProt:	P78337

Application Details

Application Notes:	Approved: WB (0.2 - 1 µg/mL) Usage: Western Blot: Suggested dilution at 1 µg/mL in 5 % skim milk / PBS buffer, and HRP conjugated anti-Rabbit IgG should be diluted in 1: 50,000 - 100,000 as second antibody. ELISA titer in peptide based assay: 1:62500.
Comment:	Target Species of Antibody: Human
Restrictions:	For Research Use only

Handling

Format:	Lyophilized
Reconstitution:	Distilled water
Concentration:	Lot specific
Buffer:	Lyophilized from PBS with 2 % sucrose
Handling Advice:	Avoid repeat freeze-thaw cycles.
Storage:	4 °C,-20 °C
Storage Comment:	Long term: -20°C, the use of 50% glycerol is recommended if storing aliquots in -20°C for long term use (up to 1 year) Short term (less than 1 week): 4°C. Avoid freeze-thaw cycles.

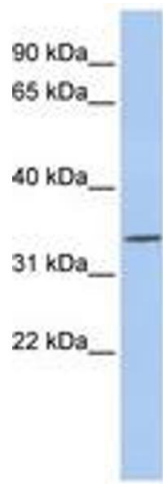


Image 1.