



[Go to Product page](#)

Datasheet for ABIN6740299  
**anti-LHX4 antibody (AA 288-337)**

1 Image

Overview

Quantity:	100 µL
Target:	LHX4
Binding Specificity:	AA 288-337
Reactivity:	Human, Mouse, Rat, Cow, Dog, Goat, Guinea Pig, Horse, Bat, Monkey, Pig
Host:	Rabbit
Clonality:	Polyclonal
Conjugate:	This LHX4 antibody is un-conjugated
Application:	Western Blotting (WB)

Product Details

Immunogen:	Synthetic peptide located between aa288-337 of human LHX4 (P53776, NP_203129). Percent identity by BLAST analysis: Human, Chimpanzee, Gorilla, Monkey, Marmoset, Mouse, Rat, Goat, Elephant, Panda, Dog, Bovine, Bat, Horse, Pig, Opossum, Guinea pig, Platypus (100%), Gibbon, Galago, Turkey (92%).  Type of Immunogen: Synthetic peptide
Isotype:	IgG
Specificity:	Human Lhx4
Predicted Reactivity:	Percent identity by BLAST analysis: Human, Mouse, Rat, Dog, Bovine, Guinea pig (100%).
Purification:	Immunoaffinity purified

## Target Details

---

Target:	LHX4
Alternative Name:	LHX4 ( <a href="#">LHX4 Products</a> )
Background:	Name/Gene ID: LHX4  Synonyms: LHX4, CPHD4, Gsh4, LIM homeobox protein 4, LIM/homeobox protein Lhx4, LIM homeobox 4
Gene ID:	89884
NCBI Accession:	<a href="#">NP_203129</a>
UniProt:	<a href="#">Q969G2</a>

## Application Details

---

Application Notes:	Approved: WB (0.2 - 1 µg/mL)  Usage: Western Blot: Suggested dilution at 1 µg/mL in 5 % skim milk / PBS buffer, and HRP conjugated anti-Rabbit IgG should be diluted in 1: 50,000 - 100,000 as second antibody. ELISA titer in peptide based assay: 1:12500.  Not recommended for: IHC-P
Comment:	Target Species of Antibody: Human
Restrictions:	For Research Use only

## Handling

---

Format:	Lyophilized
Reconstitution:	Distilled water
Concentration:	Lot specific
Buffer:	Lyophilized from PBS with 2 % sucrose
Handling Advice:	Avoid repeat freeze-thaw cycles.
Storage:	4 °C, -20 °C
Storage Comment:	Long term: -20°C, the use of 50% glycerol is recommended if storing aliquots in -20°C for long term use (up to 1 year)

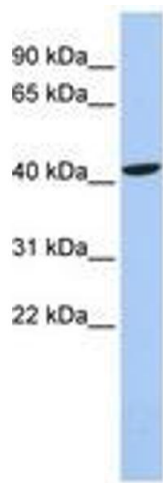
## Handling

---

Short term (less than 1 week): 4°C. Avoid freeze-thaw cycles.

## Images

---



**Image 1.**