



[Go to Product page](#)

Datasheet for ABIN6740300
anti-PCBD1 antibody (N-Term)

1 Image

Overview

Quantity:	100 µL
Target:	PCBD1
Binding Specificity:	N-Term
Reactivity:	Human, Mouse, Rat, Dog, Guinea Pig, Rabbit, Cow, Horse, Bat, Monkey, Pig, Drosophila melanogaster
Host:	Rabbit
Clonality:	Polyclonal
Conjugate:	This PCBD1 antibody is un-conjugated
Application:	Western Blotting (WB)

Product Details

Immunogen:	Synthetic peptide from N-Terminus of human PCBD1 (P61457, NP_000272). Percent identity by BLAST analysis: Human, Chimpanzee, Gorilla, Gibbon, Monkey, Galago, Mouse, Rat, Elephant, Dog, Bovine, Bat, Rabbit, Horse, Pig, Opossum, Guinea pig, Drosophila (100%), Turkey, Chicken (92%), Platypus (85%), Lizard, Nematode (84%). Type of Immunogen: Synthetic peptide
Isotype:	IgG
Specificity:	Human PCBD1 / PCD
Predicted Reactivity:	Percent identity by BLAST analysis: Human, Dog, Rabbit, Pig, Guinea pig (100%) Chicken (91%).
Purification:	Immunoaffinity purified

Target Details

Target:	PCBD1
Alternative Name:	PCBD1 / PHS (PCBD1 Products)
Background:	Name/Gene ID: PCBD1 Synonyms: PCBD1, Dimerization cofactor of HNF1, DCOH, PCBD, PHS, Dimerizing cofactor for HNF1, PCD
Gene ID:	5092
NCBI Accession:	NP_000272
UniProt:	P61457

Application Details

Application Notes:	Approved: WB (0.2 - 1 µg/mL) Usage: Western Blot: Suggested dilution at 1 µg/mL in 5 % skim milk / PBS buffer, and HRP conjugated anti-Rabbit IgG should be diluted in 1: 50,000 - 100,000 as second antibody. ELISA titer in peptide based assay: 1:312500.
Comment:	Target Species of Antibody: Human
Restrictions:	For Research Use only

Handling

Format:	Lyophilized
Reconstitution:	Distilled water
Concentration:	Lot specific
Buffer:	Lyophilized from PBS with 2 % sucrose
Handling Advice:	Avoid repeat freeze-thaw cycles.
Storage:	4 °C,-20 °C
Storage Comment:	Long term: -20°C, the use of 50% glycerol is recommended if storing aliquots in -20°C for long term use (up to 1 year) Short term (less than 1 week): 4°C. Avoid freeze-thaw cycles.

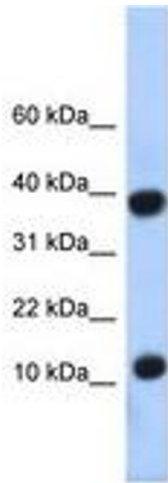


Image 1.