

Datasheet for ABIN6740306
anti-Mafg antibody (AA 71-120)[Go to Product page](#)

1 Image

Overview

Quantity:	100 µL
Target:	Mafg
Binding Specificity:	AA 71-120
Reactivity:	Human, Mouse, Rat, Dog, Cow, Pig, Chicken, Monkey, Hamster, Xenopus laevis
Host:	Rabbit
Clonality:	Polyclonal
Conjugate:	This Mafg antibody is un-conjugated
Application:	Western Blotting (WB)

Product Details

Immunogen:	Synthetic peptide located between aa71-120 of human MAFG (O15525, NP_002350). Percent identity by BLAST analysis: Human, Chimpanzee, Gorilla, Gibbon, Monkey, Galago, Marmoset, Mouse, Rat, Hamster, Dog, Bovine, Pig, Opossum, Turkey, Zebra finch, Chicken, Platypus, Xenopus, Stickleback (100%), Elephant, Panda, Horse, Guinea pig, Lizard, Zebrafish (92%). Type of Immunogen: Synthetic peptide
Isotype:	IgG
Specificity:	Human MAFG
Predicted Reactivity:	Percent identity by BLAST analysis: Human (100%) Mouse, Rat, Dog, Bovine, Chicken, Zebrafish (92%).
Purification:	Immunoaffinity purified

Target Details

Target:	Mafg
Alternative Name:	MAFG (Mafg Products)
Background:	Name/Gene ID: MAFG Synonyms: MAFG, Transcription factor MafG, HMAF
Gene ID:	4097
NCBI Accession:	NP_002350

Application Details

Application Notes:	Approved: WB (0.2 - 1 µg/mL) Usage: Western Blot: Suggested dilution at 1 µg/mL in 5 % skim milk / PBS buffer, and HRP conjugated anti-Rabbit IgG should be diluted in 1: 50,000 - 100,000 as second antibody. ELISA titer in peptide based assay: 1:62500.
Comment:	Target Species of Antibody: Human
Restrictions:	For Research Use only

Handling

Format:	Lyophilized
Reconstitution:	Distilled water
Concentration:	Lot specific
Buffer:	Lyophilized from PBS with 2 % sucrose
Handling Advice:	Avoid repeat freeze-thaw cycles.
Storage:	4 °C, -20 °C
Storage Comment:	Long term: -20°C, the use of 50% glycerol is recommended if storing aliquots in -20°C for long term use (up to 1 year) Short term (less than 1 week): 4°C. Avoid freeze-thaw cycles.

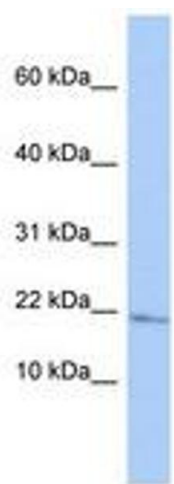


Image 1.