

Datasheet for ABIN6740312  
**anti-ME1 antibody (AA 36-85)**[Go to Product page](#)

## 1 Image

## Overview

Quantity:	100 µL
Target:	ME1
Binding Specificity:	AA 36-85
Reactivity:	Human, Dog, Pig
Host:	Rabbit
Clonality:	Polyclonal
Conjugate:	This ME1 antibody is un-conjugated
Application:	Western Blotting (WB)

## Product Details

Immunogen:	Synthetic peptide located between aa36-85 of human ME1 (P48163, NP_002386). Percent identity by BLAST analysis: Human, Chimpanzee, Gibbon (100%), Monkey, Galago, Marmoset, Sheep, Bovine, Horse (92%), Bat, Opossum, Chicken, Platypus, Lizard (90%), Elephant, Dog, Pig, Stickleback (84%).  Type of Immunogen: Synthetic peptide
Isotype:	IgG
Specificity:	Human ME1
Predicted Reactivity:	Percent identity by BLAST analysis: Sheep, Bovine, Horse (92%) Chicken (90%) Dog, Pig (84%).
Purification:	Immunoaffinity purified

## Target Details

Target:	ME1
Alternative Name:	ME1 / Malate Dehydrogenase ( <a href="#">ME1 Products</a> )
Background:	Name/Gene ID: ME1  Synonyms: ME1, HUMNDME, Malate dehydrogenase, Malic enzyme 1, Malate oxidoreductase, Malic enzyme 1, soluble, MES, NADP-ME, Pyruvic-malic carboxylase, NADP-dependent malic enzyme, Malic enzyme, cytoplasmic
Gene ID:	4199
NCBI Accession:	<a href="#">NP_002386</a>
UniProt:	<a href="#">P48163</a>
Pathways:	<a href="#">Regulation of Lipid Metabolism by PPARalpha</a>

## Application Details

Application Notes:	Approved: WB (0.2 - 1 µg/mL)  Usage: Western Blot: Suggested dilution at 1 µg/mL in 5 % skim milk / PBS buffer, and HRP conjugated anti-Rabbit IgG should be diluted in 1: 50,000 - 100,000 as second antibody. ELISA titer in peptide based assay: 1:312500.
Comment:	Target Species of Antibody: Human
Restrictions:	For Research Use only

## Handling

Format:	Lyophilized
Reconstitution:	Distilled water
Concentration:	Lot specific
Buffer:	Lyophilized from PBS with 2 % sucrose
Handling Advice:	Avoid repeat freeze-thaw cycles.
Storage:	4 °C, -20 °C
Storage Comment:	Long term: -20°C, the use of 50% glycerol is recommended if storing aliquots in -20°C for long term use (up to 1 year)

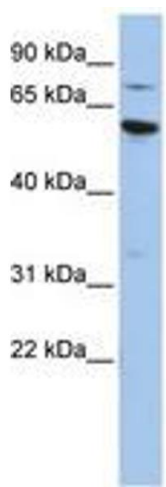
Handling

---

Short term (less than 1 week): 4°C. Avoid freeze-thaw cycles.

Images

---



**Image 1.**