



[Go to Product page](#)

Datasheet for ABIN6740320  
**anti-ZFAT antibody (AA 359-408)**

1 Image

Overview

Quantity:	100 µL
Target:	ZFAT
Binding Specificity:	AA 359-408
Reactivity:	Human, Horse, Pig
Host:	Rabbit
Clonality:	Polyclonal
Conjugate:	This ZFAT antibody is un-conjugated
Application:	Western Blotting (WB)

Product Details

Immunogen:	Synthetic peptide located between aa359-408 of human ZFAT (Q9P243, NP_001025110). Percent identity by BLAST analysis: Human, Chimpanzee, Gorilla, Gibbon, Monkey, Horse, Pig (100%), Galago, Marmoset, Mouse, Rat, Elephant, Dog, Rabbit, Guinea pig (92%), Bovine (91%), Opossum (84%).  Type of Immunogen: Synthetic peptide
Isotype:	IgG
Specificity:	Human ZFAT
Predicted Reactivity:	Percent identity by BLAST analysis: Mouse, Dog (92%).
Purification:	Immunoaffinity purified

## Target Details

---

Target:	ZFAT
Alternative Name:	ZFAT ( <a href="#">ZFAT Products</a> )
Background:	Name/Gene ID: ZFAT  Synonyms: ZFAT, AITD3, KIAA1485, ZFAT1, Zinc finger protein 406, ZNF406, Zinc finger protein ZFAT
Gene ID:	57623
NCBI Accession:	<a href="#">NP_001025110</a>
UniProt:	<a href="#">Q9P243</a>

## Application Details

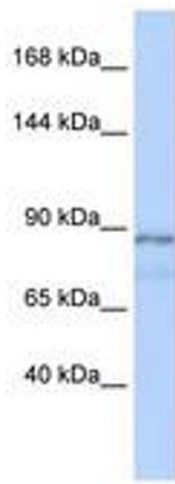
---

Application Notes:	Approved: WB (0.2 - 1 µg/mL)  Usage: Western Blot: Suggested dilution at 1 µg/mL in 5 % skim milk / PBS buffer, and HRP conjugated anti-Rabbit IgG should be diluted in 1: 50,000 - 100,000 as second antibody. ELISA titer in peptide based assay: 1:312500.
Comment:	Target Species of Antibody: Human
Restrictions:	For Research Use only

## Handling

---

Format:	Lyophilized
Reconstitution:	Distilled water
Concentration:	Lot specific
Buffer:	Lyophilized from PBS with 2 % sucrose
Handling Advice:	Avoid repeat freeze-thaw cycles.
Storage:	4 °C,-20 °C
Storage Comment:	Long term: -20°C, the use of 50% glycerol is recommended if storing aliquots in -20°C for long term use (up to 1 year)  Short term (less than 1 week): 4°C. Avoid freeze-thaw cycles.



**Image 1.**