



[Go to Product page](#)

Datasheet for ABIN6740329
anti-BBX antibody (AA 720-769)

1 Image

Overview

Quantity:	100 µL
Target:	BBX
Binding Specificity:	AA 720-769
Reactivity:	Human, Mouse, Rat, Rabbit, Cow, Monkey
Host:	Rabbit
Clonality:	Polyclonal
Conjugate:	This BBX antibody is un-conjugated
Application:	Western Blotting (WB)

Product Details

Immunogen:	Synthetic peptide located between aa720-769 of human BBX (Q8WY36, NP_064620). Percent identity by BLAST analysis: Human, Gorilla, Gibbon, Monkey, Marmoset, Elephant (100%), Galago, Dog, Horse, Opossum, Guinea pig (92%), Mouse, Panda, Bovine, Bat, Rabbit (85%), Rat (78%). Type of Immunogen: Synthetic peptide
Isotype:	IgG
Specificity:	Human BBX / HBP2
Predicted Reactivity:	Percent identity by BLAST analysis: Human (100%) Dog, Horse (92%) Mouse, Bovine, Rabbit (85%).
Purification:	Immunoaffinity purified

Target Details

Target:	BBX
Alternative Name:	BBX (BBX Products)
Background:	Name/Gene ID: BBX Synonyms: BBX, Bobby sox homolog, HSPC339, HMG box-containing protein 2, MDS001, X 001 protein, Bobby sox homolog (Drosophila), HBP2
Gene ID:	56987
NCBI Accession:	NP_064620
UniProt:	Q8WY36

Application Details

Application Notes:	Approved: WB (0.2 - 1 µg/mL) Usage: Western Blot: Suggested dilution at 1 µg/mL in 5 % skim milk / PBS buffer, and HRP conjugated anti-Rabbit IgG should be diluted in 1: 50,000 - 100,000 as second antibody. ELISA titer in peptide based assay: 1:312500.
Comment:	Target Species of Antibody: Human
Restrictions:	For Research Use only

Handling

Format:	Lyophilized
Reconstitution:	Distilled water
Concentration:	Lot specific
Buffer:	Lyophilized from PBS with 2 % sucrose
Handling Advice:	Avoid repeat freeze-thaw cycles.
Storage:	4 °C,-20 °C
Storage Comment:	Long term: -20°C, the use of 50% glycerol is recommended if storing aliquots in -20°C for long term use (up to 1 year) Short term (less than 1 week): 4°C. Avoid freeze-thaw cycles.

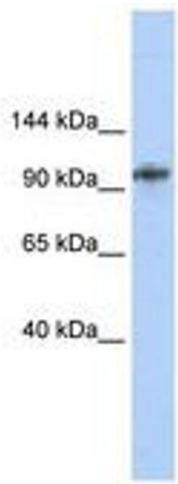


Image 1.