

Datasheet for ABIN6740334
anti-SHOX antibody (N-Term)[Go to Product page](#)

1 Image

Overview

Quantity:	100 µL
Target:	SHOX
Binding Specificity:	N-Term
Reactivity:	Human, Mouse, Dog, Rat, Chicken, Pig
Host:	Rabbit
Clonality:	Polyclonal
Conjugate:	This SHOX antibody is un-conjugated
Application:	Western Blotting (WB)

Product Details

Immunogen:	Synthetic peptide from N-Terminus of human SHOX (O15266, NP_000442). Percent identity by BLAST analysis: Human, Gorilla, Galago, Elephant, Panda, Dog, Pig, Chicken (100%), Bovine (92%), Stickleback, Zebrafish (90%), Monkey, Marmoset, Mouse, Rat, Guinea pig (81%). Type of Immunogen: Synthetic peptide
Isotype:	IgG
Specificity:	Human SHOX
Predicted Reactivity:	Percent identity by BLAST analysis: Human, Dog, Pig (100%) Bovine (92%) Zebrafish (90%) Mouse, Rat (81%).
Purification:	Immunoaffinity purified

Target Details

Target:	SHOX
Alternative Name:	SHOX (SHOX Products)
Background:	Name/Gene ID: SHOX Synonyms: SHOX, GCFX, PHOG, Short stature homeobox, Short stature homeobox protein, SS, SHOXY
Gene ID:	6473
NCBI Accession:	NP_000442
UniProt:	O15266

Application Details

Application Notes:	Approved: WB (0.2 - 1 µg/mL) Usage: Western Blot: Suggested dilution at 1 µg/mL in 5 % skim milk / PBS buffer, and HRP conjugated anti-Rabbit IgG should be diluted in 1: 50,000 - 100,000 as second antibody. ELISA titer in peptide based assay: 1:312500.
Comment:	Target Species of Antibody: Human
Restrictions:	For Research Use only

Handling

Format:	Lyophilized
Reconstitution:	Distilled water
Concentration:	Lot specific
Buffer:	Lyophilized from PBS with 2 % sucrose
Handling Advice:	Avoid repeat freeze-thaw cycles.
Storage:	4 °C,-20 °C
Storage Comment:	Long term: -20°C, the use of 50% glycerol is recommended if storing aliquots in -20°C for long term use (up to 1 year) Short term (less than 1 week): 4°C. Avoid freeze-thaw cycles.

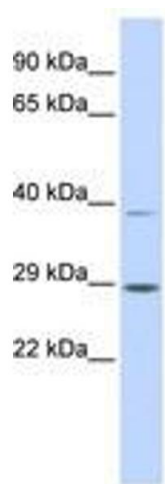


Image 1.