



[Go to Product page](#)

Datasheet for ABIN6740336
anti-JMJD4 antibody (AA 72-121)

1 Image

Overview

Quantity:	100 µL
Target:	JMJD4
Binding Specificity:	AA 72-121
Reactivity:	Human
Host:	Rabbit
Clonality:	Polyclonal
Conjugate:	This JMJD4 antibody is un-conjugated
Application:	Western Blotting (WB)

Product Details

Immunogen:	Synthetic peptide located between aa72-121 of human JMJD4 (Q9H9V9, NP_075383). Percent identity by BLAST analysis: Human, Chimpanzee, Gorilla, Gibbon, Monkey (100%), Marmoset (92%). Type of Immunogen: Synthetic peptide
Isotype:	IgG
Specificity:	Human JMJD4
Predicted Reactivity:	Percent identity by BLAST analysis: Human (100%).
Purification:	Immunoaffinity purified

Target Details

Target:	JMJD4
Alternative Name:	JMJD4 (JMJD4 Products)
Background:	Name/Gene ID: JMJD4 Synonyms: JMJD4, Jumonji domain containing 4
Gene ID:	65094
NCBI Accession:	NP_075383
UniProt:	Q9H9V9

Application Details

Application Notes:	Approved: WB (0.2 - 1 µg/mL) Usage: Western Blot: Suggested dilution at 1 µg/mL in 5 % skim milk / PBS buffer, and HRP conjugated anti-Rabbit IgG should be diluted in 1: 50,000 - 100,000 as second antibody. ELISA titer in peptide based assay: 1:12500.
Comment:	Target Species of Antibody: Human
Restrictions:	For Research Use only

Handling

Format:	Lyophilized
Reconstitution:	Distilled water
Concentration:	Lot specific
Buffer:	Lyophilized from PBS with 2 % sucrose
Handling Advice:	Avoid repeat freeze-thaw cycles.
Storage:	4 °C, -20 °C
Storage Comment:	Long term: -20°C, the use of 50% glycerol is recommended if storing aliquots in -20°C for long term use (up to 1 year) Short term (less than 1 week): 4°C. Avoid freeze-thaw cycles.

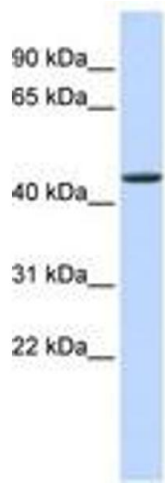


Image 1.