



[Go to Product page](#)

Datasheet for ABIN6740339

anti-T-Box 1 antibody (AA 324-373)

1 Image

Overview

Quantity:	100 µL
Target:	T-Box 1 (TBX1)
Binding Specificity:	AA 324-373
Reactivity:	Human, Mouse, Rat, Guinea Pig, Rabbit
Host:	Rabbit
Clonality:	Polyclonal
Conjugate:	This T-Box 1 antibody is un-conjugated
Application:	Western Blotting (WB)

Product Details

Immunogen:	Synthetic peptide located between aa324-373 of human TBX1 (O43435, NP_542377). Percent identity by BLAST analysis: Human, Gorilla, Gibbon (100%), Galago, Elephant, Rabbit, Guinea pig (84%), Mouse, Rat (76%). Type of Immunogen: Synthetic peptide
Isotype:	IgG
Specificity:	Human TBX1
Predicted Reactivity:	Percent identity by BLAST analysis: Human (100%) Rabbit, Guinea pig (84%).
Purification:	Immunoaffinity purified

Target Details

Target:	T-Box 1 (TBX1)
Alternative Name:	TBX1 / Brachyury (TBX1 Products)
Background:	Name/Gene ID: TBX1 Synonyms: TBX1, Brachyury, DGCR, DORV, DGS, T-box 1, T-box 1 transcription factor C, TBX1C, TGA, CAFS, CTHM, T-box protein 1, Testis-specific T-box protein, VCFS
Gene ID:	6899
NCBI Accession:	NP_542377
UniProt:	O43435
Pathways:	Retinoic Acid Receptor Signaling Pathway , Sensory Perception of Sound , Cellular Response to Molecule of Bacterial Origin , Regulation of Muscle Cell Differentiation

Application Details

Application Notes:	Approved: WB (0.2 - 1 µg/mL) Usage: Western Blot: Suggested dilution at 1 µg/mL in 5 % skim milk / PBS buffer, and HRP conjugated anti-Rabbit IgG should be diluted in 1: 50,000 - 100,000 as second antibody. ELISA titer in peptide based assay: 1:62500. Not recommended for: IHC-P
Comment:	Target Species of Antibody: Human
Restrictions:	For Research Use only

Handling

Format:	Lyophilized
Reconstitution:	Distilled water
Concentration:	Lot specific
Buffer:	Lyophilized from PBS with 2 % sucrose
Handling Advice:	Avoid repeat freeze-thaw cycles.
Storage:	4 °C, -20 °C

Handling

Storage Comment: Long term: -20°C, the use of 50% glycerol is recommended if storing aliquots in -20°C for long term use (up to 1 year)
Short term (less than 1 week): 4°C. Avoid freeze-thaw cycles.

Images

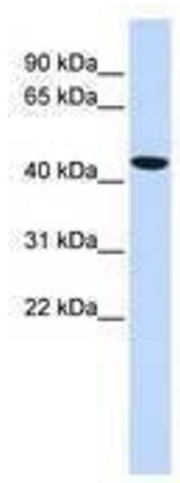


Image 1.