



[Go to Product page](#)

Datasheet for ABIN6740361  
**anti-BLZF1 antibody (AA 71-120)**

1 Image

Overview

Quantity:	100 µL
Target:	BLZF1
Binding Specificity:	AA 71-120
Reactivity:	Human, Guinea Pig, Horse, Rabbit, Monkey
Host:	Rabbit
Clonality:	Polyclonal
Conjugate:	This BLZF1 antibody is un-conjugated
Application:	Western Blotting (WB)

Product Details

Immunogen:	Synthetic peptide located between aa71-120 of human BLZF1 (Q9H2G9, NP_003657). Percent identity by BLAST analysis: Human, Chimpanzee, Gorilla, Orangutan, Gibbon, Monkey, Marmoset, Horse (100%), Bovine (92%), Galago (90%), Rabbit, Guinea pig (84%).  Type of Immunogen: Synthetic peptide
Isotype:	IgG
Specificity:	Human BLZF1
Predicted Reactivity:	Percent identity by BLAST analysis: Human, Horse (100%) Bovine (92%) Rabbit, Guinea pig (84%).
Purification:	Immunoaffinity purified

## Target Details

---

Target:	BLZF1
Alternative Name:	BLZF1 ( <a href="#">BLZF1 Products</a> )
Background:	Name/Gene ID: BLZF1  Synonyms: BLZF1, Cytoplasmic protein, Golgin-45, JEM-1, JEM-1s, JEM-1short protein, JEM1
Gene ID:	8548
NCBI Accession:	<a href="#">NP_003657</a>
UniProt:	<a href="#">Q9H2G9</a>

## Application Details

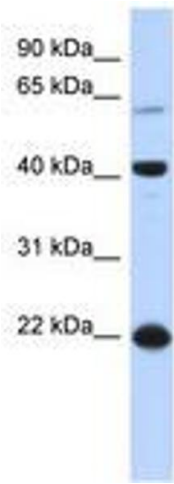
---

Application Notes:	Approved: WB (0.2 - 1 µg/mL)  Usage: Western Blot: Suggested dilution at 1 µg/mL in 5 % skim milk / PBS buffer, and HRP conjugated anti-Rabbit IgG should be diluted in 1: 50,000 - 100,000 as second antibody. ELISA titer in peptide based assay: 1:312500.
Comment:	Target Species of Antibody: Human
Restrictions:	For Research Use only

## Handling

---

Format:	Lyophilized
Reconstitution:	Distilled water
Concentration:	Lot specific
Buffer:	Lyophilized from PBS with 2 % sucrose
Handling Advice:	Avoid repeat freeze-thaw cycles.
Storage:	4 °C,-20 °C
Storage Comment:	Long term: -20°C, the use of 50% glycerol is recommended if storing aliquots in -20°C for long term use (up to 1 year)  Short term (less than 1 week): 4°C. Avoid freeze-thaw cycles.



**Image 1.**