



[Go to Product page](#)

Datasheet for ABIN6740363
anti-CCRL2 antibody (AA 36-85)

1 Image

Overview

Quantity:	100 µL
Target:	CCRL2
Binding Specificity:	AA 36-85
Reactivity:	Human, Cow, Guinea Pig, Monkey, Pig
Host:	Rabbit
Clonality:	Polyclonal
Conjugate:	This CCRL2 antibody is un-conjugated
Application:	Western Blotting (WB)

Product Details

Immunogen:	Synthetic peptide located between aa36-85 of human CCRL2 (O00421, NP_003956). Percent identity by BLAST analysis: Human, Monkey (100%), Gibbon, Horse (92%), Gorilla, Pig, Opossum, Guinea pig (85%). Type of Immunogen: Synthetic peptide
Isotype:	IgG
Specificity:	Human CCRL2
Predicted Reactivity:	Percent identity by BLAST analysis: Human (100%) Horse (92%) Pig, Guinea pig (85%).
Purification:	Immunoaffinity purified

Target Details

Target:	CCRL2
Alternative Name:	CCRL2 (CCRL2 Products)
Background:	Name/Gene ID: CCRL2 Subfamily: Chemokine Family: GPCR Synonyms: CCRL2, CCR11, Chemokine receptor X, CRAM, CRAM-A, CRAM-B, CKRX, C-C chemokine receptor-like 2, Chemokine receptor CCR11, HCR
Gene ID:	9034
NCBI Accession:	NP_003956
UniProt:	O00421

Application Details

Application Notes:	Approved: WB (0.2 - 1 µg/mL) Usage: Western Blot: Suggested dilution at 1 µg/mL in 5 % skim milk / PBS buffer, and HRP conjugated anti-Rabbit IgG should be diluted in 1: 50,000 - 100,000 as second antibody. ELISA titer in peptide based assay: 1:1562500.
Comment:	Target Species of Antibody: Human
Restrictions:	For Research Use only

Handling

Format:	Lyophilized
Reconstitution:	Distilled water
Concentration:	Lot specific
Buffer:	Lyophilized from PBS with 2 % sucrose
Handling Advice:	Avoid repeat freeze-thaw cycles.
Storage:	4 °C, -20 °C
Storage Comment:	Long term: -20°C, the use of 50% glycerol is recommended if storing aliquots in -20°C for long term use (up to 1 year)

Handling

Short term (less than 1 week): 4°C. Avoid freeze-thaw cycles.

Images

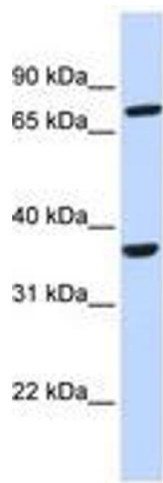


Image 1.