



[Go to Product page](#)

Datasheet for ABIN6740365
anti-RGS6 antibody (N-Term)

1 Image

Overview

Quantity:	100 µL
Target:	RGS6
Binding Specificity:	N-Term
Reactivity:	Human
Host:	Rabbit
Clonality:	Polyclonal
Conjugate:	This RGS6 antibody is un-conjugated
Application:	Western Blotting (WB)

Product Details

Immunogen:	Synthetic peptide from N-Terminus of human RGS6 (P49758, NP_004287). Percent identity by BLAST analysis: Human, Chimpanzee, Gorilla, Orangutan (100%), Mouse (92%). Type of Immunogen: Synthetic peptide
Isotype:	IgG
Specificity:	Human RGS6
Predicted Reactivity:	Percent identity by BLAST analysis: Human (100%) Mouse (92%).
Purification:	Immunoaffinity purified

Target Details

Target:	RGS6
---------	------

Target Details

Alternative Name:	RGS6 (RGS6 Products)
Background:	Name/Gene ID: RGS6 Family: Regulator of G-protein signalling Synonyms: RGS6, GAP, GTPase activating protein, S914, H_DJ1108A12.1, WUGSC:H_DJ0283M22.1, WUGSC:H_DJ1108A12.1
Gene ID:	9628
NCBI Accession:	NP_004287
UniProt:	P49758
Pathways:	Myometrial Relaxation and Contraction, Regulation of G-Protein Coupled Receptor Protein Signaling

Application Details

Application Notes:	Approved: WB (0.2 - 1 µg/mL) Usage: Western Blot: Suggested dilution at 1 µg/mL in 5 % skim milk / PBS buffer, and HRP conjugated anti-Rabbit IgG should be diluted in 1: 50,000 - 100,000 as second antibody. ELISA titer in peptide based assay: 1:12500.
Comment:	Target Species of Antibody: Human
Restrictions:	For Research Use only

Handling

Format:	Lyophilized
Reconstitution:	Distilled water
Concentration:	Lot specific
Buffer:	Lyophilized from PBS with 2 % sucrose
Handling Advice:	Avoid repeat freeze-thaw cycles.
Storage:	4 °C, -20 °C
Storage Comment:	Long term: -20°C, the use of 50% glycerol is recommended if storing aliquots in -20°C for long term use (up to 1 year)

Handling

Short term (less than 1 week): 4°C. Avoid freeze-thaw cycles.

Images

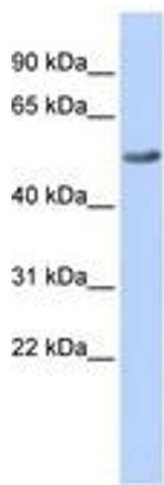


Image 1.