



Datasheet for ABIN6740367
anti-PKNOX1 antibody (AA 215-264)



[Go to Product page](#)

1 Image

Overview

Quantity:	100 µL
Target:	PKNOX1
Binding Specificity:	AA 215-264
Reactivity:	Human, Zebrafish (Danio rerio), Monkey
Host:	Rabbit
Clonality:	Polyclonal
Conjugate:	This PKNOX1 antibody is un-conjugated
Application:	Western Blotting (WB)

Product Details

Immunogen:	Synthetic peptide located between aa215-264 of human PKNOX1 (P55347, NP_004562). Percent identity by BLAST analysis: Human, Chimpanzee, Gorilla, Gibbon, Monkey, Marmoset (100%), Galago, Mouse, Rat, Panda, Dog, Bovine, Bat, Rabbit, Horse, Opossum, Guinea pig, Turkey, Zebra finch, Chicken, Platypus (92%), Elephant, Stickleback (84%). Type of Immunogen: Synthetic peptide
Isotype:	IgG
Specificity:	Human PKNOX1
Predicted Reactivity:	Percent identity by BLAST analysis: Human (100%) Rat, Dog, Bovine, Chicken, Zebrafish (92%).
Purification:	Immunoaffinity purified

Target Details

Target:	PKNOX1
Alternative Name:	PKNOX1 / PREP1 (PKNOX1 Products)
Background:	Name/Gene ID: PKNOX1 Synonyms: PKNOX1, Homeobox protein PKNOX1, Homeobox protein PREP-1, PBX/knotted 1 homeobox 1, Pkonx1c, PBX/knotted homeobox 1, PREP1, Pbx regulating protein-1
Gene ID:	5316
NCBI Accession:	NP_004562
UniProt:	P55347

Application Details

Application Notes:	Approved: WB (0.2 - 1 µg/mL) Usage: Western Blot: Suggested dilution at 1 µg/mL in 5 % skim milk / PBS buffer, and HRP conjugated anti-Rabbit IgG should be diluted in 1: 50,000 - 100,000 as second antibody. ELISA titer in peptide based assay: 1:62500.
Comment:	Target Species of Antibody: Human
Restrictions:	For Research Use only

Handling

Format:	Lyophilized
Reconstitution:	Distilled water
Concentration:	Lot specific
Buffer:	Lyophilized from PBS with 2 % sucrose
Handling Advice:	Avoid repeat freeze-thaw cycles.
Storage:	4 °C,-20 °C
Storage Comment:	Long term: -20°C, the use of 50% glycerol is recommended if storing aliquots in -20°C for long term use (up to 1 year) Short term (less than 1 week): 4°C. Avoid freeze-thaw cycles.

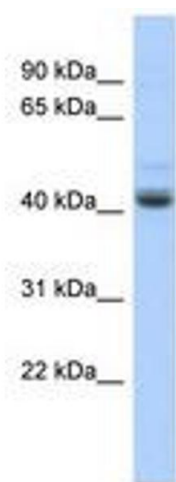


Image 1.