



[Go to Product page](#)

## Datasheet for ABIN6740375 **anti-C16orf80 antibody (AA 71-120)**

### 1 Image

#### Overview

Quantity:	100 µL
Target:	C16orf80
Binding Specificity:	AA 71-120
Reactivity:	Human, Mouse, Rat, Dog, Zebrafish (Danio rerio), Cow, Guinea Pig, Horse, Rabbit, Chicken, Xenopus laevis, Monkey, Pig, Bat
Host:	Rabbit
Clonality:	Polyclonal
Conjugate:	This C16orf80 antibody is un-conjugated
Application:	Western Blotting (WB)

#### Product Details

Immunogen:	Synthetic peptide located between aa71-120 of human C16orf80 (Q9Y6A4, NP_037374). Percent identity by BLAST analysis: Human, Chimpanzee, Gorilla, Gibbon, Monkey, Galago, Marmoset, Mouse, Rat, Elephant, Dog, Bovine, Bat, Rabbit, Horse, Pig, Opossum, Guinea pig, Turkey, Zebra finch, Chicken, Platypus, Xenopus, Catfish, Zebrafish, Sea squirt, Tunicate (100%), Drosophila, Rice, Beetle (92%), Grape (85%).  Type of Immunogen: Synthetic peptide
Isotype:	IgG
Specificity:	Human C16orf80 / GTL3
Predicted Reactivity:	Percent identity by BLAST analysis: Rabbit, Horse, Guinea pig (100%).

## Product Details

---

Purification: Immunoaffinity purified

## Target Details

---

Target: C16orf80

Alternative Name: CFAP20 / GTL3 ([C16orf80 Products](#))

Background: Name/Gene ID: CFAP20

Synonyms: CFAP20, C16orf80, Gene trap locus 3, EVORF, UPF0468 protein C16orf80, FSAP23, GTL3, Transcription factor IIB

Gene ID: 29105

NCBI Accession: [NP\\_037374](#)

UniProt: [Q9Y6A4](#)

## Application Details

---

Application Notes: Approved: WB (0.2 - 1 µg/mL)

Usage: Western Blot: Suggested dilution at 1 µg/mL in 5 % skim milk / PBS buffer, and HRP conjugated anti-Rabbit IgG should be diluted in 1: 50,000 - 100,000 as second antibody. ELISA titer in peptide based assay: 1:62500.

Comment: Target Species of Antibody: Human

Restrictions: For Research Use only

## Handling

---

Format: Lyophilized

Reconstitution: Distilled water

Concentration: Lot specific

Buffer: Lyophilized from PBS with 2 % sucrose

Handling Advice: Avoid repeat freeze-thaw cycles.

Storage: 4 °C, -20 °C

Storage Comment: Long term: -20°C, the use of 50% glycerol is recommended if storing aliquots in -20°C for long

## Handling

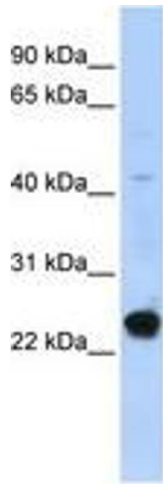
---

term use (up to 1 year)

Short term (less than 1 week): 4°C. Avoid freeze-thaw cycles.

## Images

---



**Image 1.**