

Datasheet for ABIN6740376 anti-PHF16 antibody (AA 359-408)



[Go to Product page](#)

1 Image

Overview

Quantity:	100 µL
Target:	PHF16
Binding Specificity:	AA 359-408
Reactivity:	Human, Guinea Pig, Mouse, Dog, Horse
Host:	Rabbit
Clonality:	Polyclonal
Conjugate:	This PHF16 antibody is un-conjugated
Application:	Western Blotting (WB)

Product Details

Immunogen:	Synthetic peptide located between aa359-408 of human PHF16 (Q92613, NP_055550). Percent identity by BLAST analysis: Human, Chimpanzee, Gorilla, Gibbon, Monkey (100%), Marmoset, Rat, Elephant, Bovine, Rabbit, Pig (92%), Galago, Mouse, Dog, Horse, Guinea pig (84%). Type of Immunogen: Synthetic peptide
Isotype:	IgG
Specificity:	Human PHF16
Predicted Reactivity:	Percent identity by BLAST analysis: Bovine, Rabbit, Pig (92%) Mouse, Dog, Horse, Guinea pig (84%).
Purification:	Immunoaffinity purified

Target Details

Target:	PHF16
Alternative Name:	JADE3 / PHF16 (PHF16 Products)
Background:	Name/Gene ID: JADE3 Synonyms: JADE3, PHF16, PHD finger protein 16, KIAA0215, Protein Jade-3
Gene ID:	9767
NCBI Accession:	NP_055550
UniProt:	Q92613

Application Details

Application Notes:	Approved: WB (0.2 - 1 µg/mL) Usage: Western Blot: Suggested dilution at 1 µg/mL in 5 % skim milk / PBS buffer, and HRP conjugated anti-Rabbit IgG should be diluted in 1: 50,000 - 100,000 as second antibody. ELISA titer in peptide based assay: 1:312500.
Comment:	Target Species of Antibody: Human
Restrictions:	For Research Use only

Handling

Format:	Lyophilized
Reconstitution:	Distilled water
Concentration:	Lot specific
Buffer:	Lyophilized from PBS with 2 % sucrose
Handling Advice:	Avoid repeat freeze-thaw cycles.
Storage:	4 °C, -20 °C
Storage Comment:	Long term: -20°C, the use of 50% glycerol is recommended if storing aliquots in -20°C for long term use (up to 1 year) Short term (less than 1 week): 4°C. Avoid freeze-thaw cycles.

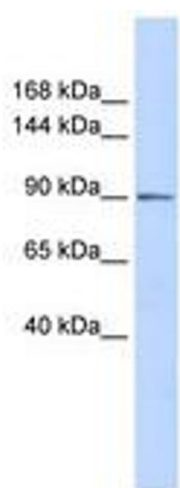


Image 1.