



[Go to Product page](#)

Datasheet for ABIN6740378
anti-BTBD3 antibody (N-Term)

1 Image

Overview

Quantity:	100 µL
Target:	BTBD3
Binding Specificity:	N-Term
Reactivity:	Human, Mouse, Rat, Cow, Dog, Guinea Pig, Rabbit, Monkey
Host:	Rabbit
Clonality:	Polyclonal
Conjugate:	This BTBD3 antibody is un-conjugated
Application:	Western Blotting (WB)

Product Details

Immunogen:	Synthetic peptide from N-Terminus of human BTBD3 (Q9Y2F9, NP_055777). Percent identity by BLAST analysis: Human, Gorilla, Gibbon, Marmoset, Rabbit, Opossum (100%), Elephant, Bat (92%), Turkey, Chicken (91%), Galago, Mouse, Rat, Dog, Bovine, Guinea pig, Platypus, Lizard (85%). Type of Immunogen: Synthetic peptide
Isotype:	IgG
Specificity:	Human BTBD3
Predicted Reactivity:	Percent identity by BLAST analysis: Human, Rabbit (100%) Chicken (91%) Mouse, Rat, Dog, Bovine, Guinea pig (85%).
Purification:	Immunoaffinity purified

Target Details

Target: BTBD3

Alternative Name: BTBD3 ([BTBD3 Products](#))

Background: Name/Gene ID: BTBD3

Synonyms: BTBD3, BTB (POZ) domain containing 3, DJ742J24.1, KIAA0952

Gene ID: 22903

NCBI Accession: [NP_055777](#)

UniProt: [Q9Y2F9](#)

Application Details

Application Notes: Approved: WB (0.2 - 1 µg/mL)

Usage: Western Blot: Suggested dilution at 1 µg/mL in 5 % skim milk / PBS buffer, and HRP conjugated anti-Rabbit IgG should be diluted in 1: 50,000 - 100,000 as second antibody. ELISA titer in peptide based assay: 1:312500.

Comment: Target Species of Antibody: Human

Restrictions: For Research Use only

Handling

Format: Lyophilized

Reconstitution: Distilled water

Concentration: Lot specific

Buffer: Lyophilized from PBS with 2 % sucrose

Handling Advice: Avoid repeat freeze-thaw cycles.

Storage: 4 °C, -20 °C

Storage Comment: Long term: -20°C, the use of 50% glycerol is recommended if storing aliquots in -20°C for long term use (up to 1 year)

Short term (less than 1 week): 4°C. Avoid freeze-thaw cycles.

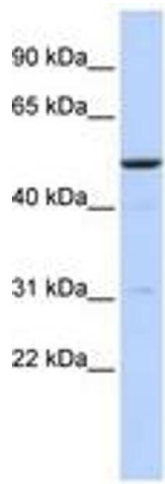


Image 1.