



[Go to Product page](#)

Datasheet for ABIN6740379
anti-CHD2 antibody (AA 36-85)

1 Image

Overview

Quantity:	100 µL
Target:	CHD2
Binding Specificity:	AA 36-85
Reactivity:	Human, Rat, Cow, Dog, Horse, Monkey, Pig, Guinea Pig, Bat, Hamster
Host:	Rabbit
Clonality:	Polyclonal
Conjugate:	This CHD2 antibody is un-conjugated
Application:	Western Blotting (WB)

Product Details

Immunogen:	Synthetic peptide located between aa36-85 of human CHD2 (Q96IP5, NP_001036037). Percent identity by BLAST analysis: Human, Chimpanzee, Gorilla, Orangutan, Gibbon, Monkey, Galago, Marmoset, Rat, Hamster, Elephant, Dog, Bovine, Bat, Horse, Pig, Guinea pig (100%), Mouse, Opossum (92%). Type of Immunogen: Synthetic peptide
Isotype:	IgG
Specificity:	Human CHD2
Predicted Reactivity:	Percent identity by BLAST analysis: Human, Rat, Dog, Horse, Pig, Guinea pig (100%) Mouse (92%).
Purification:	Immunoaffinity purified

Target Details

Target:	CHD2
Alternative Name:	CHD2 (CHD2 Products)
Background:	Name/Gene ID: CHD2 Synonyms: CHD2, ATP-dependent helicase CHD2, CHD-2
Gene ID:	1106
NCBI Accession:	NP_001036037
UniProt:	O14647

Application Details

Application Notes:	Approved: WB (0.2 - 1 µg/mL) Usage: Western Blot: Suggested dilution at 1 µg/mL in 5 % skim milk / PBS buffer, and HRP conjugated anti-Rabbit IgG should be diluted in 1: 50,000 - 100,000 as second antibody. ELISA titer in peptide based assay: 1:62500. Not recommended for: IHC-P
Comment:	Target Species of Antibody: Human
Restrictions:	For Research Use only

Handling

Format:	Lyophilized
Reconstitution:	Distilled water
Concentration:	Lot specific
Buffer:	Lyophilized from PBS with 2 % sucrose
Handling Advice:	Avoid repeat freeze-thaw cycles.
Storage:	4 °C, -20 °C
Storage Comment:	Long term: -20°C, the use of 50% glycerol is recommended if storing aliquots in -20°C for long term use (up to 1 year) Short term (less than 1 week): 4°C. Avoid freeze-thaw cycles.

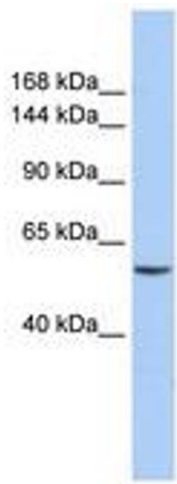


Image 1.