

Datasheet for ABIN6740386
anti-SCML4 antibody (AA 72-121)



[Go to Product page](#)

1 Image

Overview

| | |
|----------------------|--------------------------------------|
| Quantity: | 100 µL |
| Target: | SCML4 |
| Binding Specificity: | AA 72-121 |
| Reactivity: | Human, Mouse, Horse, Rabbit, Rat |
| Host: | Rabbit |
| Clonality: | Polyclonal |
| Conjugate: | This SCML4 antibody is un-conjugated |
| Application: | Western Blotting (WB) |

Product Details

| | |
|-----------------------|---|
| Immunogen: | Synthetic peptide located between aa72-121 of human SCML4 (Q8N228, NP_932347). Percent identity by BLAST analysis: Human, Chimpanzee, Gorilla, Gibbon, Marmoset (100%), Monkey, Panda, Dog, Bovine, Pig, Opossum, Lizard (92%), Rat, Rabbit, Horse, Zebra finch (85%), Mouse (78%). Type of Immunogen: Synthetic peptide |
| Isotype: | IgG |
| Specificity: | Human SCML4 |
| Predicted Reactivity: | Percent identity by BLAST analysis: Human (100%) Dog, Bovine, Pig (92%) Rat, Rabbit, Horse (85%). |
| Purification: | Immunoaffinity purified |

Target Details

| | |
|-------------------|---|
| Target: | SCML4 |
| Alternative Name: | SCML4 (SCML4 Products) |
| Background: | Name/Gene ID: SCML4 Synonyms: SCML4, DJ47M23.1 |
| Gene ID: | 256380 |
| NCBI Accession: | NP_932347 |
| UniProt: | Q8N228 |

Application Details

| | |
|--------------------|--|
| Application Notes: | Approved: WB (0.2 - 1 µg/mL) Usage: Western Blot: Suggested dilution at 1 µg/mL in 5 % skim milk / PBS buffer, and HRP conjugated anti-Rabbit IgG should be diluted in 1: 50,000 - 100,000 as second antibody. ELISA titer in peptide based assay: 1:1562500. |
| Comment: | Target Species of Antibody: Human |
| Restrictions: | For Research Use only |

Handling

| | |
|------------------|---|
| Format: | Lyophilized |
| Reconstitution: | Distilled water |
| Concentration: | Lot specific |
| Buffer: | Lyophilized from PBS with 2 % sucrose |
| Handling Advice: | Avoid repeat freeze-thaw cycles. |
| Storage: | 4 °C, -20 °C |
| Storage Comment: | Long term: -20°C, the use of 50% glycerol is recommended if storing aliquots in -20°C for long term use (up to 1 year) Short term (less than 1 week): 4°C. Avoid freeze-thaw cycles. |

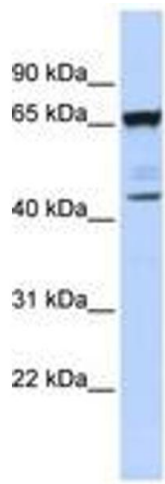


Image 1.