



[Go to Product page](#)

Datasheet for ABIN6740390  
**anti-TRIM8 antibody (AA 360-409)**

1 Image

Overview

Quantity:	100 µL
Target:	TRIM8
Binding Specificity:	AA 360-409
Reactivity:	Human, Mouse, Rat, Dog, Cow, Pig, Rabbit, Horse, Hamster, Monkey
Host:	Rabbit
Clonality:	Polyclonal
Conjugate:	This TRIM8 antibody is un-conjugated
Application:	Western Blotting (WB)

Product Details

Immunogen:	Synthetic peptide located between aa360-409 of human TRIM8 (Q9BZR9, NP_112174). Percent identity by BLAST analysis: Human, Chimpanzee, Gorilla, Gibbon, Monkey, Galago, Marmoset, Mouse, Rat, Hamster, Panda, Dog, Bovine, Rabbit, Horse, Pig, Opossum (100%), Bat, Guinea pig, Lizard (92%), Elephant, Turkey, Zebra finch, Chicken (85%).  Type of Immunogen: Synthetic peptide
Isotype:	IgG
Specificity:	Human TRIM8 / GERP
Predicted Reactivity:	Percent identity by BLAST analysis: Human, Mouse, Rat, Dog, Bovine, Rabbit, Horse, Pig (100%) Guinea pig (92%) Chicken (85%).
Purification:	Immunoaffinity purified

## Target Details

---

Target: TRIM8

Alternative Name: TRIM8 / GERP ([TRIM8 Products](#))

Background: Name/Gene ID: TRIM8  
Family: Tripartite Motif

Synonyms: TRIM8, RING finger protein 27, Tripartite motif-containing 8, Tripartite motif containing 8, GERP, RNF27, Tripartite motif protein TRIM8

Gene ID: 81603

NCBI Accession: [NP\\_112174](#)

UniProt: [Q9BZR9](#)

## Application Details

---

Application Notes: Approved: WB (0.2 - 1 µg/mL)

Usage: Western Blot: Suggested dilution at 1 µg/mL in 5 % skim milk / PBS buffer, and HRP conjugated anti-Rabbit IgG should be diluted in 1: 50,000 - 100,000 as second antibody. ELISA titer in peptide based assay: 1:62500.

Not recommended for: IHC-P

Comment: Target Species of Antibody: Human

Restrictions: For Research Use only

## Handling

---

Format: Lyophilized

Reconstitution: Distilled water

Concentration: Lot specific

Buffer: Lyophilized from PBS with 2 % sucrose

Handling Advice: Avoid repeat freeze-thaw cycles.

Storage: 4 °C, -20 °C

Storage Comment: Long term: -20°C, the use of 50% glycerol is recommended if storing aliquots in -20°C for long

## Handling

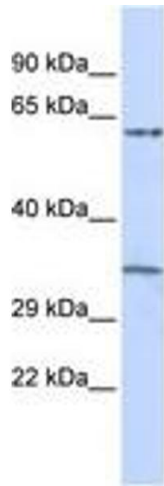
---

term use (up to 1 year)

Short term (less than 1 week): 4°C. Avoid freeze-thaw cycles.

## Images

---



**Image 1.**