



[Go to Product page](#)

Datasheet for ABIN6740401

anti-WD Repeat Domain 45B (WDR45B) (AA 144-193) antibody

1 Image

Overview

Quantity:	100 µL
Target:	WD Repeat Domain 45B (WDR45B)
Binding Specificity:	AA 144-193
Reactivity:	Human, Mouse, Rat, Cow, Guinea Pig, Horse, Rabbit, Zebrafish (Danio rerio), Bat, Monkey, Pig
Host:	Rabbit
Clonality:	Polyclonal
Conjugate:	Un-conjugated
Application:	Western Blotting (WB)

Product Details

Immunogen:	Synthetic peptide located between aa144-193 of human WDR45B (Q5MNZ6, NP_062559). Percent identity by BLAST analysis: Human, Chimpanzee, Gorilla, Orangutan, Gibbon, Monkey, Galago, Marmoset, Mouse, Rat, Elephant, Panda, Bovine, Bat, Rabbit, Horse, Pig, Guinea pig (100%), Xenopus (92%), Beetle (91%), Opossum, Turkey, Chicken, Lizard (85%), Platypus (84%), Drosophila (83%). Type of Immunogen: Synthetic peptide
Isotype:	IgG
Specificity:	Human WDR45L
Predicted Reactivity:	Percent identity by BLAST analysis: Human, Mouse, Rat, Bovine, Rabbit, Horse, Pig (100%).
Purification:	Immunoaffinity purified

Target Details

Target: WD Repeat Domain 45B (WDR45B)

Alternative Name: WDR45L ([WDR45B Products](#))

Background: Name/Gene ID: WDR45B

Synonyms: WDR45B, WDR45L, WIPI3, WD repeat domain 45B, WIPI-3

Gene ID: 56270

NCBI Accession: [NP_062559](#)

UniProt: [Q5MNZ6](#)

Application Details

Application Notes: Approved: WB (0.2 - 1 µg/mL)

Usage: Western Blot: Suggested dilution at 1 µg/mL in 5 % skim milk / PBS buffer, and HRP conjugated anti-Rabbit IgG should be diluted in 1: 50,000 - 100,000 as second antibody. ELISA titer in peptide based assay: 1:62500.

Comment: Target Species of Antibody: Human

Restrictions: For Research Use only

Handling

Format: Lyophilized

Reconstitution: Distilled water

Concentration: Lot specific

Buffer: Lyophilized from PBS with 2 % sucrose

Handling Advice: Avoid repeat freeze-thaw cycles.

Storage: 4 °C, -20 °C

Storage Comment: Long term: -20°C, the use of 50% glycerol is recommended if storing aliquots in -20°C for long term use (up to 1 year)

Short term (less than 1 week): 4°C. Avoid freeze-thaw cycles.

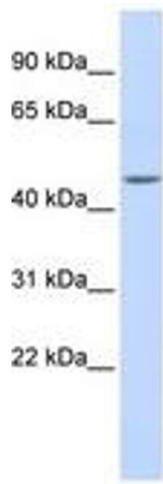


Image 1.