



[Go to Product page](#)

Datasheet for ABIN6740403  
**anti-ZNF684 antibody (AA 72-121)**

1 Image

Overview

Quantity:	100 µL
Target:	ZNF684
Binding Specificity:	AA 72-121
Reactivity:	Human, Pig
Host:	Rabbit
Clonality:	Polyclonal
Conjugate:	This ZNF684 antibody is un-conjugated
Application:	Western Blotting (WB)

Product Details

Immunogen:	Synthetic peptide located between aa72-121 of human ZNF684 (B3KSP5, NP_689586). Percent identity by BLAST analysis: Human, Orangutan (100%), Gorilla, Gibbon, Monkey (92%), Marmoset (84%).  Type of Immunogen: Synthetic peptide
Isotype:	IgG
Specificity:	Human ZNF684
Predicted Reactivity:	Percent identity by BLAST analysis: Human (100%).
Purification:	Immunoaffinity purified

## Target Details

---

Target: ZNF684

Alternative Name: ZNF684 ([ZNF684 Products](#))

Background: Name/Gene ID: ZNF684

Synonyms: ZNF684, Zinc finger protein 684, Hypothetical protein MGC27466

Gene ID: 127396

NCBI Accession: [NP\\_689586](#)

UniProt: [Q5T5D7](#)

## Application Details

---

Application Notes: Approved: WB (0.2 - 1 µg/mL)

Usage: Western Blot: Suggested dilution at 1 µg/mL in 5 % skim milk / PBS buffer, and HRP conjugated anti-Rabbit IgG should be diluted in 1: 50,000 - 100,000 as second antibody. ELISA titer in peptide based assay: 1:12500.

Comment: Target Species of Antibody: Human

Restrictions: For Research Use only

## Handling

---

Format: Lyophilized

Reconstitution: Distilled water

Concentration: Lot specific

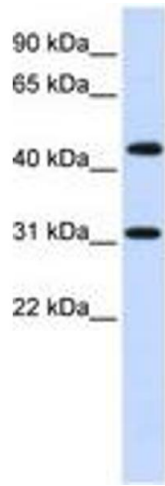
Buffer: Lyophilized from PBS with 2 % sucrose

Handling Advice: Avoid repeat freeze-thaw cycles.

Storage: 4 °C, -20 °C

Storage Comment: Long term: -20°C, the use of 50% glycerol is recommended if storing aliquots in -20°C for long term use (up to 1 year)

Short term (less than 1 week): 4°C. Avoid freeze-thaw cycles.



**Image 1.**