



Datasheet for ABIN6740409
anti-GABRA5 antibody (C-Term)



[Go to Product page](#)

1 Image

Overview

| | |
|----------------------|---|
| Quantity: | 100 µL |
| Target: | GABRA5 |
| Binding Specificity: | C-Term |
| Reactivity: | Human, Mouse, Rat, Rabbit, Guinea Pig, Chicken, Hamster |
| Host: | Rabbit |
| Clonality: | Polyclonal |
| Conjugate: | This GABRA5 antibody is un-conjugated |
| Application: | Western Blotting (WB) |

Product Details

| | |
|-----------------------|--|
| Immunogen: | Synthetic peptide from C-Terminus of human GABRA5 (P31644, NP_000801). Percent identity by BLAST analysis: Human, Chimpanzee, Gibbon, Galago, Marmoset, Mouse, Rat, Hamster, Rabbit, Opossum, Guinea pig, Turkey, Chicken, Lizard (100%), Monkey, Elephant, Panda, Dog, Bovine, Horse, Pig, Platypus, Xenopus (92%), Zebrafish (91%), Zebra finch (85%), Gorilla, Bat (81%). Type of Immunogen: Synthetic peptide |
| Isotype: | IgG |
| Specificity: | Human GABRA5 |
| Predicted Reactivity: | Percent identity by BLAST analysis: Human, Rabbit, Guinea pig, Chicken (100%) Dog, Horse, Pig (92%) Zebrafish (91%). |

Product Details

Purification: Immunoaffinity purified

Target Details

Target: GABRA5

Alternative Name: GABRA5 ([GABRA5 Products](#))

Background: Name/Gene ID: GABRA5
Subfamily: GABA A receptor
Family: Ion Channel

Synonyms: GABRA5, Alpha 5, GABA A receptor alpha 5

Gene ID: 2558

NCBI Accession: [NP_000801](#)

UniProt: [P31644](#)

Pathways: [Sensory Perception of Sound, Synaptic Membrane](#)

Application Details

Application Notes: Approved: WB (0.2 - 1 µg/mL)

Usage: Western Blot: Suggested dilution at 1 µg/mL in 5 % skim milk / PBS buffer, and HRP conjugated anti-Rabbit IgG should be diluted in 1: 50,000 - 100,000 as second antibody. ELISA titer in peptide based assay: 1:312500.

Comment: Target Species of Antibody: Human

Restrictions: For Research Use only

Handling

Format: Lyophilized

Reconstitution: Distilled water

Concentration: Lot specific

Buffer: Lyophilized from PBS with 2 % sucrose

Handling Advice: Avoid repeat freeze-thaw cycles.

Handling

Storage: 4 °C, -20 °C

Storage Comment: Long term: -20°C, the use of 50% glycerol is recommended if storing aliquots in -20°C for long term use (up to 1 year)
Short term (less than 1 week): 4°C. Avoid freeze-thaw cycles.

Images

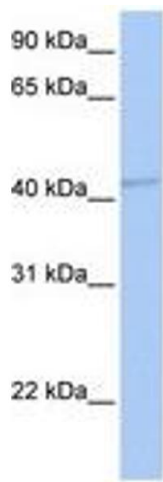


Image 1.