

Datasheet for ABIN6740410
anti-SHROOM2 antibody (AA 1295-1344)[Go to Product page](#)

1 Image

Overview

| | |
|----------------------|---|
| Quantity: | 100 µL |
| Target: | SHROOM2 |
| Binding Specificity: | AA 1295-1344 |
| Reactivity: | Human, Mouse, Rat, Cow, Dog, Guinea Pig, Chicken, Monkey, Pig |
| Host: | Rabbit |
| Clonality: | Polyclonal |
| Conjugate: | This SHROOM2 antibody is un-conjugated |
| Application: | Western Blotting (WB) |

Product Details

| | |
|-----------------------|--|
| Immunogen: | Synthetic peptide located between aa1295-1344 of human SHROOM2 (Q13796, NP_001640). Percent identity by BLAST analysis: Human, Gorilla, Gibbon, Monkey, Galago, Marmoset, Mouse, Rat, Elephant, Panda, Dog, Bovine, Pig, Opossum, Guinea pig, Turkey, Zebra finch, Chicken (100%), Bat, Horse (92%), Xenopus (90%), Platypus, Lizard (85%). Type of Immunogen: Synthetic peptide |
| Isotype: | IgG |
| Specificity: | Human SHROOM2 |
| Predicted Reactivity: | Percent identity by BLAST analysis: Human, Mouse, Rat, Dog (100%) Horse, Guinea pig, Chicken (92%) Bovine (91%). |
| Purification: | Immunoaffinity purified |

Target Details

| | |
|-------------------|--|
| Target: | SHROOM2 |
| Alternative Name: | SHROOM2 (SHROOM2 Products) |
| Background: | Name/Gene ID: SHROOM2 Synonyms: SHROOM2, Apical-like protein, HSAPXL, Protein APXL, Protein Shroom2, APX homolog of Xenopus, APXL, Shroom family member 2 |
| Gene ID: | 357 |
| NCBI Accession: | NP_001640 |
| UniProt: | Q13796 |
| Pathways: | Cell-Cell Junction Organization , Asymmetric Protein Localization |

Application Details

| | |
|--------------------|---|
| Application Notes: | Approved: WB (0.2 - 1 µg/mL) Usage: Western Blot: Suggested dilution at 1 µg/mL in 5 % skim milk / PBS buffer, and HRP conjugated anti-Rabbit IgG should be diluted in 1: 50,000 - 100,000 as second antibody. ELISA titer in peptide based assay: 1:312500. Not recommended for: IHC-P |
| Comment: | Target Species of Antibody: Human |
| Restrictions: | For Research Use only |

Handling

| | |
|------------------|--|
| Format: | Lyophilized |
| Reconstitution: | Distilled water |
| Concentration: | Lot specific |
| Buffer: | Lyophilized from PBS with 2 % sucrose |
| Handling Advice: | Avoid repeat freeze-thaw cycles. |
| Storage: | 4 °C,-20 °C |
| Storage Comment: | Long term: -20°C, the use of 50% glycerol is recommended if storing aliquots in -20°C for long |

Handling

term use (up to 1 year)

Short term (less than 1 week): 4°C. Avoid freeze-thaw cycles.

Images

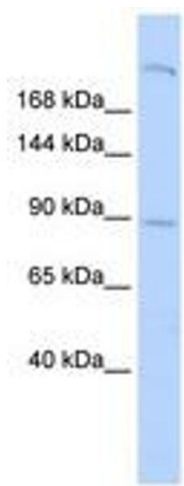


Image 1.