

Datasheet for ABIN6740419
anti-BTBD10 antibody (N-Term)[Go to Product page](#)

1 Image

Overview

Quantity:	100 µL
Target:	BTBD10
Binding Specificity:	N-Term
Reactivity:	Human, Rat, Mouse, Horse, Pig
Host:	Rabbit
Clonality:	Polyclonal
Conjugate:	This BTBD10 antibody is un-conjugated
Application:	Western Blotting (WB)

Product Details

Immunogen:	Synthetic peptide from N-Terminus of human BTBD10 (Q9BSF8, NP_115696). Percent identity by BLAST analysis: Human, Chimpanzee, Gorilla, Orangutan, Monkey (100%), Gibbon, Marmoset, Turkey, Chicken (92%), Xenopus (90%), Galago, Rat, Hamster, Elephant, Panda, Rabbit, Horse, Pig, Opossum, Guinea pig, Zebra finch (85%), Mouse (78%). Type of Immunogen: Synthetic peptide
Isotype:	IgG
Specificity:	Human BTBD10
Predicted Reactivity:	Percent identity by BLAST analysis: Human (100%) Chicken (92%) Rat, Horse, Pig, Xenopus (85%).
Purification:	Immunoaffinity purified

Target Details

Target:	BTBD10
Alternative Name:	BTBD10 / GMRP-1 (BTBD10 Products)
Background:	Name/Gene ID: BTBD10 Synonyms: BTBD10, GMRP-1, BTB (POZ) domain containing 10, GMRP1, KSARCOSIN
Gene ID:	84280
NCBI Accession:	NP_115696
UniProt:	Q9BSF8

Application Details

Application Notes:	Approved: WB (0.2 - 1 µg/mL) Usage: Western Blot: Suggested dilution at 1 µg/mL in 5 % skim milk / PBS buffer, and HRP conjugated anti-Rabbit IgG should be diluted in 1: 50,000 - 100,000 as second antibody. ELISA titer in peptide based assay: 1:62500.
Comment:	Target Species of Antibody: Human
Restrictions:	For Research Use only

Handling

Format:	Lyophilized
Reconstitution:	Distilled water
Concentration:	Lot specific
Buffer:	Lyophilized from PBS with 2 % sucrose
Handling Advice:	Avoid repeat freeze-thaw cycles.
Storage:	4 °C, -20 °C
Storage Comment:	Long term: -20°C, the use of 50% glycerol is recommended if storing aliquots in -20°C for long term use (up to 1 year) Short term (less than 1 week): 4°C. Avoid freeze-thaw cycles.

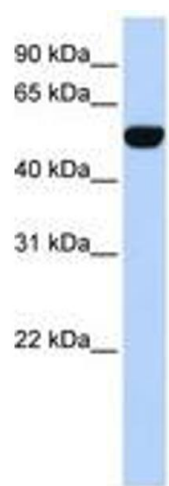


Image 1.