



Datasheet for ABIN6740423
anti-KCNJ1 antibody (AA 216-265)



[Go to Product page](#)

1 Image

Overview

Quantity:	100 µL
Target:	KCNJ1
Binding Specificity:	AA 216-265
Reactivity:	Human, Cow, Horse, Dog, Guinea Pig, Rabbit, Monkey, Bat, Xenopus laevis
Host:	Rabbit
Clonality:	Polyclonal
Conjugate:	This KCNJ1 antibody is un-conjugated
Application:	Western Blotting (WB)

Product Details

Immunogen:	Synthetic peptide located between aa216-265 of human KCNJ1 (P48048, NP_000211). Percent identity by BLAST analysis: Human, Gorilla, Orangutan, Gibbon, Monkey, Galago, Elephant, Dog, Bat, Rabbit, Horse, Guinea pig, Platypus, Xenopus (100%), Mouse, Rat, Hamster, Dolphin, Pig, Opossum, Turkey, Zebra finch, Chicken (92%), Bovine, Stickleback (85%). Type of Immunogen: Synthetic peptide
Isotype:	IgG
Specificity:	Human KCNJ1 / Kir1.1
Predicted Reactivity:	Percent identity by BLAST analysis: Dog, Rabbit, Horse, Guinea pig, Xenopus (100%) Mouse, Rat, Pig, Chicken (92%) Bovine (85%).
Purification:	Immunoaffinity purified

Target Details

Target:	KCNJ1
Alternative Name:	KCNJ1 / ROMK (KCNJ1 Products)
Background:	Name/Gene ID: KCNJ1 Subfamily: Potassium channel - inward-rectifying Family: Ion channel Synonyms: KCNJ1, KIR1.1, ROMK1, ROMK3, ROMK5, Inwardly rectifying K+ channel, ROMK, Romk2, ROMK4
Gene ID:	3758
NCBI Accession:	NP_000211
UniProt:	P48048

Application Details

Application Notes:	Approved: WB (0.2 - 1 µg/mL) Usage: Western Blot: Suggested dilution at 1 µg/mL in 5 % skim milk / PBS buffer, and HRP conjugated anti-Rabbit IgG should be diluted in 1: 50,000 - 100,000 as second antibody. ELISA titer in peptide based assay: 1:312500.
Comment:	Target Species of Antibody: Human
Restrictions:	For Research Use only

Handling

Format:	Lyophilized
Reconstitution:	Distilled water
Concentration:	Lot specific
Buffer:	Lyophilized from PBS with 2 % sucrose
Handling Advice:	Avoid repeat freeze-thaw cycles.
Storage:	4 °C, -20 °C
Storage Comment:	Long term: -20°C, the use of 50% glycerol is recommended if storing aliquots in -20°C for long term use (up to 1 year)

Handling

Short term (less than 1 week): 4°C. Avoid freeze-thaw cycles.

Images

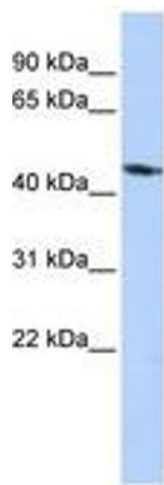


Image 1.