

Datasheet for ABIN6740424
anti-KCNN2 antibody (AA 72-121)[Go to Product page](#)

1 Image

Overview

Quantity:	100 µL
Target:	KCNN2
Binding Specificity:	AA 72-121
Reactivity:	Human, Mouse, Rat, Cow, Dog, Guinea Pig, Horse, Rabbit, Monkey, Pig, Bat, Chicken
Host:	Rabbit
Clonality:	Polyclonal
Conjugate:	This KCNN2 antibody is un-conjugated
Application:	Western Blotting (WB)

Product Details

Immunogen:	Synthetic peptide located between aa72-121 of human KCNN2 (Q6PJI0, NP_740721). Percent identity by BLAST analysis: Human, Chimpanzee, Gorilla, Orangutan, Gibbon, Monkey, Galago, Marmoset, Mouse, Rat, Elephant, Panda, Dog, Bovine, Bat, Rabbit, Horse, Pig, Opossum, Guinea pig, Turkey, Zebra finch, Chicken (100%), Xenopus, Zebrafish (92%). Type of Immunogen: Synthetic peptide
Isotype:	IgG
Specificity:	Human KCNN2
Predicted Reactivity:	Percent identity by BLAST analysis: Human, Mouse, Rat, Dog, Bovine, Rabbit, Horse, Pig, Chicken (100%).
Purification:	Immunoaffinity purified

Target Details

Target:	KCNN2
Alternative Name:	KCNN2 (KCNN2 Products)
Background:	Name/Gene ID: KCNN2 Subfamily: Potassium channel - calcium-activated Family: Ion Channel Synonyms: KCNN2, HSK2, KCa2.2, Sk2, SKCA2, SKCa 2
Gene ID:	3781
NCBI Accession:	NP_740721
UniProt:	Q9H2S1

Application Details

Application Notes:	Approved: WB (0.2 - 1 µg/mL) Usage: Western Blot: Suggested dilution at 1 µg/mL in 5 % skim milk / PBS buffer, and HRP conjugated anti-Rabbit IgG should be diluted in 1: 50,000 - 100,000 as second antibody. ELISA titer in peptide based assay: 1:62500. Not recommended for: IHC-P
Comment:	Target Species of Antibody: Human
Restrictions:	For Research Use only

Handling

Format:	Lyophilized
Reconstitution:	Distilled water
Concentration:	Lot specific
Buffer:	Lyophilized from PBS with 2 % sucrose
Handling Advice:	Avoid repeat freeze-thaw cycles.
Storage:	4 °C, -20 °C
Storage Comment:	Long term: -20°C, the use of 50% glycerol is recommended if storing aliquots in -20°C for long

Handling

term use (up to 1 year)

Short term (less than 1 week): 4°C. Avoid freeze-thaw cycles.

Images

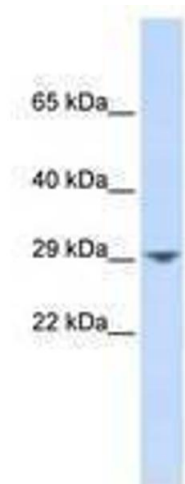


Image 1.