

Datasheet for ABIN6740428
anti-P2RX5 antibody (AA 35-84)[Go to Product page](#)

1 Image

Overview

Quantity:	100 µL
Target:	P2RX5
Binding Specificity:	AA 35-84
Reactivity:	Human, Rat, Mouse, Cow, Dog, Rabbit
Host:	Rabbit
Clonality:	Polyclonal
Conjugate:	This P2RX5 antibody is un-conjugated
Application:	Western Blotting (WB)

Product Details

Immunogen:	Synthetic peptide located between aa35-84 of human P2RX5 (Q93086). Percent identity by BLAST analysis: Human, Chimpanzee, Gorilla, Gibbon, Elephant (100%), Guinea pig (92%), Mouse, Rat (85%), Bovine, Pig, Zebra finch, Chicken (84%). Type of Immunogen: Synthetic peptide
Isotype:	IgG
Specificity:	Human P2RX5 / P2X5
Predicted Reactivity:	Percent identity by BLAST analysis: Human (100%) Mouse, Rat (85%) Bovine, Chicken (84%).
Purification:	Immunoaffinity purified

Target Details

Target:	P2RX5
Alternative Name:	P2RX5 / P2X5 (P2RX5 Products)
Background:	Name/Gene ID: P2RX5 Subfamily: P2X receptor Family: Ion Channel Synonyms: P2RX5, ATP receptor, ATP receptor subunit, LRH-1, p2X5R, p2X purinoceptor 5, p2X5 purinoceptor, Purinergic receptor, Ionotropic ATP receptor P2X5, p2RX5, p2X receptor 5, p2X5
Gene ID:	5026
UniProt:	Q93086

Application Details

Application Notes:	Approved: WB (0.2 - 1 µg/mL) Usage: Western Blot: Suggested dilution at 1 µg/mL in 5 % skim milk / PBS buffer, and HRP conjugated anti-Rabbit IgG should be diluted in 1: 50,000 - 100,000 as second antibody. ELISA titer in peptide based assay: 1:12500.
Comment:	Target Species of Antibody: Human
Restrictions:	For Research Use only

Handling

Format:	Lyophilized
Reconstitution:	Distilled water
Concentration:	Lot specific
Buffer:	Lyophilized from PBS with 2 % sucrose
Handling Advice:	Avoid repeat freeze-thaw cycles.
Storage:	4 °C, -20 °C
Storage Comment:	Long term: -20°C, the use of 50% glycerol is recommended if storing aliquots in -20°C for long term use (up to 1 year) Short term (less than 1 week): 4°C. Avoid freeze-thaw cycles.

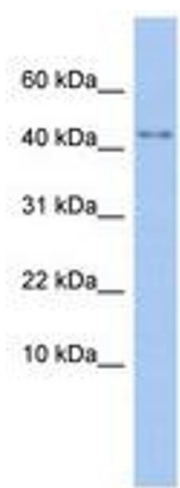


Image 1.