



[Go to Product page](#)

Datasheet for ABIN6740485
anti-AKAP1 antibody (AA 541-571)

1 Image

Overview

Quantity:	100 µL
Target:	AKAP1
Binding Specificity:	AA 541-571
Reactivity:	Human
Host:	Rabbit
Clonality:	Polyclonal
Conjugate:	This AKAP1 antibody is un-conjugated
Application:	Western Blotting (WB)

Product Details

Immunogen:	Synthetic peptide located between aa541-571 of human AKAP1 (Q92667). Percent identity by BLAST analysis: Human (100%). Type of Immunogen: Synthetic peptide
Isotype:	IgG
Specificity:	Human AKAP1
Predicted Reactivity:	Percent identity by BLAST analysis: Human (100%).
Purification:	Immunoaffinity purified

Target Details

Target:	AKAP1
---------	-------

Target Details

Alternative Name:	AKAP1 / AKAP (AKAP1 Products)
Background:	Name/Gene ID: AKAP1 Synonyms: AKAP1, AKAP, AKAP121, AKAP149, AKAP 149, AKAP84, D-AKAP1, S-AKAP84, SAKAP84, PRKA1, Protein kinase A1, D-AKAP-1, PPP1R43
Gene ID:	8165
UniProt:	Q92667
Pathways:	Synaptic Membrane

Application Details

Application Notes:	Approved: WB (0.2 - 1 µg/mL) Usage: Western Blot: Suggested dilution at 1 µg/mL in 5 % skim milk / PBS buffer, and HRP conjugated anti-Rabbit IgG should be diluted in 1: 50,000 - 100,000 as second antibody. ELISA titer in peptide based assay: 1:1562500.
Comment:	Target Species of Antibody: Human
Restrictions:	For Research Use only

Handling

Format:	Lyophilized
Reconstitution:	Distilled water
Concentration:	Lot specific
Buffer:	Lyophilized from PBS with 2 % sucrose
Handling Advice:	Avoid repeat freeze-thaw cycles.
Storage:	4 °C, -20 °C
Storage Comment:	Long term: -20°C, the use of 50% glycerol is recommended if storing aliquots in -20°C for long term use (up to 1 year) Short term (less than 1 week): 4°C. Avoid freeze-thaw cycles.

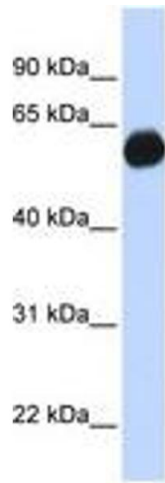


Image 1.