

Datasheet for ABIN6740521

**anti-Zinc Finger Protein 62 (ZFP62) (AA 271-320) antibody**[Go to Product page](#)**1** Image

## Overview

Quantity:	100 µL
Target:	Zinc Finger Protein 62 (ZFP62)
Binding Specificity:	AA 271-320
Reactivity:	Human, Cow, Rabbit, Mouse, Pig, Horse, Xenopus laevis, Bat, Hamster, Monkey
Host:	Rabbit
Clonality:	Polyclonal
Conjugate:	Un-conjugated
Application:	Western Blotting (WB)

## Product Details

Immunogen:	Synthetic peptide located between aa271-320 of human ZFP62. Percent identity by BLAST analysis: Human, Chimpanzee, Gorilla, Gibbon, Monkey, Galago, Marmoset, Mouse, Hamster, Elephant, Panda, Bovine, Bat, Rabbit, Horse, Pig, Xenopus, Beetle (100%).  Type of Immunogen: Synthetic peptide
Isotype:	IgG
Specificity:	Human ZFP62
Predicted Reactivity:	Percent identity by BLAST analysis: Human, Mouse, Bovine, Rabbit, Horse, Pig (100%).
Purification:	Immunoaffinity purified

## Target Details

Target:	Zinc Finger Protein 62 (ZFP62)
Alternative Name:	ZFP62 ( <a href="#">ZFP62 Products</a> )
Background:	Name/Gene ID: ZFP62  Synonyms: ZFP62, ZET, Zinc finger protein 62 homolog, ZNF755, Zfp-62, ZFP62 zinc finger protein
Gene ID:	643836

## Application Details

Application Notes:	Approved: WB (0.2 - 1 µg/mL)  Usage: Western Blot: Suggested dilution at 1 µg/mL in 5 % skim milk / PBS buffer, and HRP conjugated anti-Rabbit IgG should be diluted in 1: 50,000 - 100,000 as second antibody. ELISA titer in peptide based assay: 1:312500.
Comment:	Target Species of Antibody: Human
Restrictions:	For Research Use only

## Handling

Format:	Lyophilized
Reconstitution:	Distilled water
Concentration:	Lot specific
Buffer:	Lyophilized from PBS with 2 % sucrose
Handling Advice:	Avoid repeat freeze-thaw cycles.
Storage:	4 °C,-20 °C
Storage Comment:	Long term: -20°C, the use of 50% glycerol is recommended if storing aliquots in -20°C for long term use (up to 1 year)  Short term (less than 1 week): 4°C. Avoid freeze-thaw cycles.

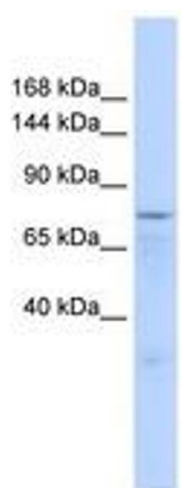


Image 1.