



Datasheet for ABIN6740530  
**anti-TADA2L antibody (C-Term)**



[Go to Product page](#)

1 Image

Overview

Quantity:	100 µL
Target:	TADA2L (TADA2A)
Binding Specificity:	C-Term
Reactivity:	Human, Monkey, Cow, Dog, Rabbit, Guinea Pig, Horse, Chicken, Bat, Hamster
Host:	Rabbit
Clonality:	Polyclonal
Conjugate:	This TADA2L antibody is un-conjugated
Application:	Western Blotting (WB)

Product Details

Immunogen:	Synthetic peptide from C-Terminus of human TADA2A (075478, NP_001479). Percent identity by BLAST analysis: Human, Chimpanzee, Gorilla, Gibbon, Monkey, Galago, Marmoset, Hamster, Elephant, Panda, Dog, Bovine, Bat, Rabbit, Horse, Guinea pig, Turkey, Zebra finch, Chicken, Platypus (100%), Mouse, Rat, Opossum (92%), Xenopus (85%), Stickleback, Zebrafish (84%).  Type of Immunogen: Synthetic peptide
Isotype:	IgG
Specificity:	Human TADA2A / TADA2L
Predicted Reactivity:	Percent identity by BLAST analysis: Chicken (100%).
Purification:	Immunoaffinity purified

## Target Details

---

Target:	TADA2L (TADA2A)
Alternative Name:	TADA2L / ADA2A ( <a href="#">TADA2A Products</a> )
Background:	Name/Gene ID: TADA2A  Synonyms: TADA2A, ADA2A, ADA2-like protein, ADA2, KL04P, HADA2, Transcriptional adapter 2-like, Transcriptional adaptor 2A, TADA2L
Gene ID:	6871
NCBI Accession:	<a href="#">NP_001479</a>
UniProt:	<a href="#">O75478</a>
Pathways:	<a href="#">Chromatin Binding</a>

## Application Details

---

Application Notes:	Approved: WB (0.2 - 1 µg/mL)  Usage: Western Blot: Suggested dilution at 1 µg/mL in 5 % skim milk / PBS buffer, and HRP conjugated anti-Rabbit IgG should be diluted in 1: 50,000 - 100,000 as second antibody. ELISA titer in peptide based assay: 1:312500.  Not recommended for: IHC-P
Comment:	Target Species of Antibody: Human
Restrictions:	For Research Use only

## Handling

---

Format:	Lyophilized
Reconstitution:	Distilled water
Concentration:	Lot specific
Buffer:	Lyophilized from PBS with 2 % sucrose
Handling Advice:	Avoid repeat freeze-thaw cycles.
Storage:	4 °C,-20 °C
Storage Comment:	Long term: -20°C, the use of 50% glycerol is recommended if storing aliquots in -20°C for long

## Handling

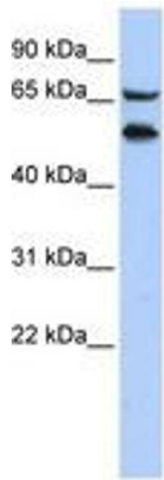
---

term use (up to 1 year)

Short term (less than 1 week): 4°C. Avoid freeze-thaw cycles.

## Images

---



**Image 1.**