

Datasheet for ABIN6740531
anti-AFF2 antibody (AA 1224-1273)[Go to Product page](#)

1 Image

Overview

Quantity:	100 µL
Target:	AFF2
Binding Specificity:	AA 1224-1273
Reactivity:	Human, Cow, Rabbit, Horse, Guinea Pig, Bat, Monkey
Host:	Rabbit
Clonality:	Polyclonal
Conjugate:	This AFF2 antibody is un-conjugated
Application:	Western Blotting (WB)

Product Details

Immunogen:	Synthetic peptide located between aa1224-1273 of human AFF2 (P51816, NP_002016). Percent identity by BLAST analysis: Human, Chimpanzee, Orangutan, Gibbon, Monkey, Galago, Elephant, Bovine, Bat, Rabbit, Horse, Guinea pig (100%), Mouse, Rat, Platypus, Xenopus (92%). Type of Immunogen: Synthetic peptide
Isotype:	IgG
Specificity:	Human AFF2
Predicted Reactivity:	Percent identity by BLAST analysis: Human, Bovine, Rabbit, Horse, Guinea pig (100%) Mouse, Rat (92%).
Purification:	Immunoaffinity purified

Target Details

Target:	AFF2
Alternative Name:	AFF2 / OX19 (AFF2 Products)
Background:	Name/Gene ID: AFF2 Synonyms: AFF2, AF4/FMR2 family, member 2, AF4/FMR2 family member 2, FMR2, Fragile X mental retardation 2, FRAXE, MRX2, Protein Ox19, FMR2P, OX19, Protein FMR-2
Gene ID:	2334
NCBI Accession:	NP_002016
UniProt:	P51816

Application Details

Application Notes:	Approved: WB (0.2 - 1 µg/mL) Usage: Western Blot: Suggested dilution at 1 µg/mL in 5 % skim milk / PBS buffer, and HRP conjugated anti-Rabbit IgG should be diluted in 1: 50,000 - 100,000 as second antibody. ELISA titer in peptide based assay: 1:312500.
Comment:	Target Species of Antibody: Human
Restrictions:	For Research Use only

Handling

Format:	Lyophilized
Reconstitution:	Distilled water
Concentration:	Lot specific
Buffer:	Lyophilized from PBS with 2 % sucrose
Handling Advice:	Avoid repeat freeze-thaw cycles.
Storage:	4 °C, -20 °C
Storage Comment:	Long term: -20°C, the use of 50% glycerol is recommended if storing aliquots in -20°C for long term use (up to 1 year) Short term (less than 1 week): 4°C. Avoid freeze-thaw cycles.

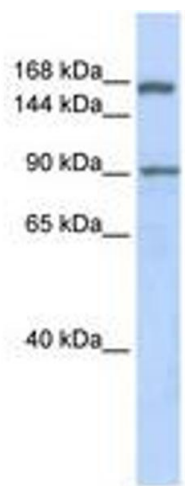


Image 1.