



[Go to Product page](#)

Datasheet for ABIN6740549

anti-ZFP36L1 antibody (C-Term)

1 Image

Overview

Quantity:	100 µL
Target:	ZFP36L1
Binding Specificity:	C-Term
Reactivity:	Human, Mouse, Rat, Dog, Cow, Guinea Pig, Horse, Pig, Hamster, Monkey
Host:	Rabbit
Clonality:	Polyclonal
Conjugate:	This ZFP36L1 antibody is un-conjugated
Application:	Western Blotting (WB)

Product Details

Immunogen:	Synthetic peptide from C-Terminus of human ZFP36L1 (Q07352, NP_004917). Percent identity by BLAST analysis: Human, Chimpanzee, Orangutan, Gibbon, Galago, Marmoset, Mouse, Rat, Hamster, Elephant, Panda, Dog, Bovine, Horse, Pig, Opossum, Guinea pig (100%), Rabbit (92%), Zebra finch, Lizard (85%), Xenopus (84%). Type of Immunogen: Synthetic peptide
Isotype:	IgG
Specificity:	Human ZFP36L1
Predicted Reactivity:	Percent identity by BLAST analysis: Human, Mouse, Rat, Dog, Bovine, Pig, Guinea pig (100%).
Purification:	Immunoaffinity purified

Target Details

Target:	ZFP36L1
Alternative Name:	ZFP36L1 (ZFP36L1 Products)
Background:	Name/Gene ID: ZFP36L1 Synonyms: ZFP36L1, Berg36, Butyrate response factor 1, Early response factor Berg36, ERF-1, ERF1, EGF-response factor 1, Protein TIS11B, RNF162B, TIS11B, CMG1
Gene ID:	677
NCBI Accession:	NP_004917
UniProt:	Q07352

Application Details

Application Notes:	Approved: WB (0.2 - 1 µg/mL) Usage: Western Blot: Suggested dilution at 1 µg/mL in 5 % skim milk / PBS buffer, and HRP conjugated anti-Rabbit IgG should be diluted in 1: 50,000 - 100,000 as second antibody. ELISA titer in peptide based assay: 1:312500.
Comment:	Target Species of Antibody: Human
Restrictions:	For Research Use only

Handling

Format:	Lyophilized
Reconstitution:	Distilled water
Concentration:	Lot specific
Buffer:	Lyophilized from PBS with 2 % sucrose
Handling Advice:	Avoid repeat freeze-thaw cycles.
Storage:	4 °C,-20 °C
Storage Comment:	Long term: -20°C, the use of 50% glycerol is recommended if storing aliquots in -20°C for long term use (up to 1 year) Short term (less than 1 week): 4°C. Avoid freeze-thaw cycles.

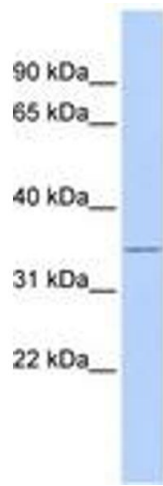


Image 1.