

Datasheet for ABIN6740558
anti-Advillin antibody (C-Term)[Go to Product page](#)

1 Image

Overview

Quantity:	100 µL
Target:	Advillin (AVIL)
Binding Specificity:	C-Term
Reactivity:	Human, Dog, Guinea Pig, Cow, Horse, Bat
Host:	Rabbit
Clonality:	Polyclonal
Conjugate:	This Advillin antibody is un-conjugated
Application:	Western Blotting (WB)

Product Details

Immunogen:	Synthetic peptide from C-Terminus of human AVIL (O75366, NP_006567). Percent identity by BLAST analysis: Human, Chimpanzee, Gorilla, Gibbon, Monkey, Dog, Bovine, Bat, Horse (100%), Galago, Marmoset, Mouse, Elephant, Rabbit, Stickleback (92%), Rat (91%), Guinea pig (84%). Type of Immunogen: Synthetic peptide
Isotype:	IgG
Specificity:	Human AVIL / Advillin
Predicted Reactivity:	Percent identity by BLAST analysis: Human, Dog, Bovine, Horse (100%) Mouse, Rabbit (92%) Rat (91%) Guinea pig (84%).
Purification:	Immunoaffinity purified

Target Details

Target:	Advillin (AVIL)
Alternative Name:	AVIL / Advillin (AVIL Products)
Background:	Name/Gene ID: AVIL Synonyms: AVIL, ADVIL, Advillin, DOC6, p92
Gene ID:	10677
NCBI Accession:	NP_006567
UniProt:	O75366
Pathways:	Regulation of Actin Filament Polymerization

Application Details

Application Notes:	Approved: WB (0.2 - 1 µg/mL) Usage: Western Blot: Suggested dilution at 1 µg/mL in 5 % skim milk / PBS buffer, and HRP conjugated anti-Rabbit IgG should be diluted in 1: 50,000 - 100,000 as second antibody. ELISA titer in peptide based assay: 1:312500.
Comment:	Target Species of Antibody: Human
Restrictions:	For Research Use only

Handling

Format:	Lyophilized
Reconstitution:	Distilled water
Concentration:	Lot specific
Buffer:	Lyophilized from PBS with 2 % sucrose
Handling Advice:	Avoid repeat freeze-thaw cycles.
Storage:	4 °C,-20 °C
Storage Comment:	Long term: -20°C, the use of 50% glycerol is recommended if storing aliquots in -20°C for long term use (up to 1 year) Short term (less than 1 week): 4°C. Avoid freeze-thaw cycles.

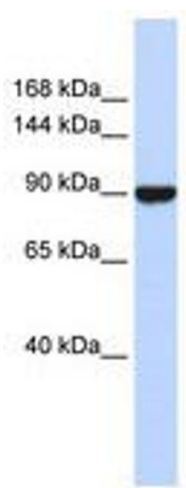


Image 1.