



[Go to Product page](#)

Datasheet for ABIN6740570
anti-ZNF281 antibody (C-Term)

1 Image

Overview

Quantity:	100 µL
Target:	ZNF281
Binding Specificity:	C-Term
Reactivity:	Human, Mouse, Rat, Guinea Pig, Horse, Rabbit, Cow, Bat, Chicken, Monkey, Pig
Host:	Rabbit
Clonality:	Polyclonal
Conjugate:	This ZNF281 antibody is un-conjugated
Application:	Western Blotting (WB)

Product Details

Immunogen:	Synthetic peptide from C-Terminus of human ZNF281 (Q9Y2X9, NP_036614). Percent identity by BLAST analysis: Human, Chimpanzee, Gorilla, Gibbon, Monkey, Galago, Marmoset, Mouse, Rat, Elephant, Panda, Bovine, Bat, Rabbit, Horse, Pig, Opossum, Guinea pig, Turkey, Zebra finch, Chicken, Platypus (100%), Dog (92%). Type of Immunogen: Synthetic peptide
Isotype:	IgG
Specificity:	Human ZNF281
Predicted Reactivity:	Percent identity by BLAST analysis: Human, Bovine, Rabbit, Horse, Guinea pig, Chicken (100%) Dog (92%).
Purification:	Immunoaffinity purified

Target Details

Target:	ZNF281
Alternative Name:	ZNF281 / Zfp281 (ZNF281 Products)
Background:	Name/Gene ID: ZNF281 Family: Zinc Finger Synonyms: ZNF281, GZP1, ZBP99, Zfp281, ZNP-99 transcription factor, Zinc finger protein 281, ZNP-99, Transcription factor ZBP-99, ZBP-99
Gene ID:	23528
NCBI Accession:	NP_036614
UniProt:	Q9Y2X9
Pathways:	Embryonic Body Morphogenesis

Application Details

Application Notes:	Approved: WB (0.2 - 1 µg/mL) Usage: Western Blot: Suggested dilution at 1 µg/mL in 5 % skim milk / PBS buffer, and HRP conjugated anti-Rabbit IgG should be diluted in 1: 50,000 - 100,000 as second antibody. ELISA titer in peptide based assay: 1:312500.
Comment:	Target Species of Antibody: Human
Restrictions:	For Research Use only

Handling

Format:	Lyophilized
Reconstitution:	Distilled water
Concentration:	Lot specific
Buffer:	Lyophilized from PBS with 2 % sucrose
Handling Advice:	Avoid repeat freeze-thaw cycles.
Storage:	4 °C,-20 °C
Storage Comment:	Long term: -20°C, the use of 50% glycerol is recommended if storing aliquots in -20°C for long term use (up to 1 year)

Handling

Short term (less than 1 week): 4°C. Avoid freeze-thaw cycles.

Images

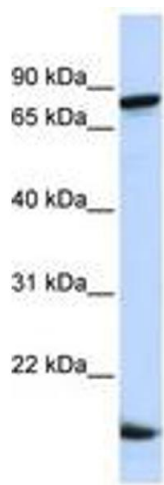


Image 1.