

Datasheet for ABIN6740586  
**anti-SIX2 antibody (AA 35-84)**[Go to Product page](#)

## 1 Image

## Overview

Quantity:	100 µL
Target:	SIX2
Binding Specificity:	AA 35-84
Reactivity:	Human, Mouse, Rat, Cow, Dog, Guinea Pig, Horse, Rabbit, Sheep, Zebrafish (Danio rerio), Chicken, Monkey, Pig, Xenopus laevis
Host:	Rabbit
Clonality:	Polyclonal
Conjugate:	This SIX2 antibody is un-conjugated
Application:	Western Blotting (WB)

## Product Details

Immunogen:	Synthetic peptide located between aa35-84 of human SIX2 (Q9NPC8, NP_058628). Percent identity by BLAST analysis: Human, Chimpanzee, Gorilla, Gibbon, Monkey, Galago, Marmoset, Mouse, Rat, Sheep, Panda, Dog, Bovine, Rabbit, Horse, Pig, Opossum, Guinea pig, Zebra finch, Chicken, Platypus, Xenopus, Stickleback, Zebrafish, Sea squirt (100%), Orangutan, Tamarin, Hamster, Elephant, Bat, Salmon (92%), Beetle (91%), Water flea (85%).  Type of Immunogen: Synthetic peptide
Isotype:	IgG
Specificity:	Human SIX2
Predicted Reactivity:	Percent identity by BLAST analysis: Human, Mouse, Rat, Dog, Rabbit, Pig, Chicken, Xenopus,

## Product Details

Zebrafish (100%).

Purification: Immunoaffinity purified

## Target Details

Target: SIX2

Alternative Name: SIX2 ([SIX2 Products](#))

Background: Name/Gene ID: SIX2

Synonyms: SIX2, Homeobox protein SIX2, Sine oculis homeobox homolog 2, SIX homeobox 2

Gene ID: 10736

NCBI Accession: [NP\\_058628](#)

UniProt: [Q9NPC8](#)

Pathways: [Protein targeting to Nucleus](#)

## Application Details

Application Notes: Approved: WB (0.2 - 1 µg/mL)

Usage: Western Blot: Suggested dilution at 1 µg/mL in 5 % skim milk / PBS buffer, and HRP conjugated anti-Rabbit IgG should be diluted in 1: 50,000 - 100,000 as second antibody. ELISA titer in peptide based assay: 1:62500.

Comment: Target Species of Antibody: Human

Restrictions: For Research Use only

## Handling

Format: Lyophilized

Reconstitution: Distilled water

Concentration: Lot specific

Buffer: Lyophilized from PBS with 2 % sucrose

Handling Advice: Avoid repeat freeze-thaw cycles.

Storage: 4 °C,-20 °C

Handling

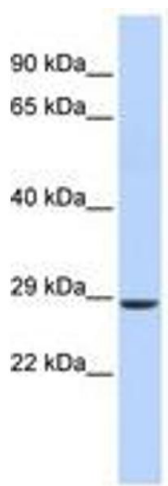
---

Storage Comment: Long term: -20°C, the use of 50% glycerol is recommended if storing aliquots in -20°C for long term use (up to 1 year)

Short term (less than 1 week): 4°C. Avoid freeze-thaw cycles.

Images

---



**Image 1.**