



[Go to Product page](#)

Datasheet for ABIN6740589  
**anti-POGK antibody (C-Term)**

1 Image

Overview

Quantity:	100 µL
Target:	POGK
Binding Specificity:	C-Term
Reactivity:	Human, Rat, Mouse, Monkey
Host:	Rabbit
Clonality:	Polyclonal
Conjugate:	This POGK antibody is un-conjugated
Application:	Western Blotting (WB)

Product Details

Immunogen:	Synthetic peptide from C-Terminus of human POGK (Q9P215, NP_060012). Percent identity by BLAST analysis: Human, Gorilla, Orangutan, Gibbon, Monkey, Galago (100%), Elephant, Bovine, Horse, Pig (92%), Rat, Hamster (85%), Mouse (78%).  Type of Immunogen: Synthetic peptide
Isotype:	IgG
Specificity:	Human POGK
Predicted Reactivity:	Percent identity by BLAST analysis: Human (100%) Bovine, Horse, Pig (92%) Rat (85%).
Purification:	Immunoaffinity purified

## Target Details

---

Target:	POGK
Alternative Name:	POGK ( <a href="#">POGK Products</a> )
Background:	Name/Gene ID: POGK  Synonyms: POGK, BASS2, LST003, KIAA1513, KRAB box domain containing 2, KRBOX2, KIAA15131
Gene ID:	57645
NCBI Accession:	<a href="#">NP_060012</a>
UniProt:	<a href="#">Q9P215</a>

## Application Details

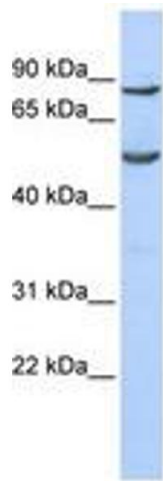
---

Application Notes:	Approved: WB (0.2 - 1 µg/mL)  Usage: Western Blot: Suggested dilution at 1 µg/mL in 5 % skim milk / PBS buffer, and HRP conjugated anti-Rabbit IgG should be diluted in 1: 50,000 - 100,000 as second antibody. ELISA titer in peptide based assay: 1:1562500.
Comment:	Target Species of Antibody: Human
Restrictions:	For Research Use only

## Handling

---

Format:	Lyophilized
Reconstitution:	Distilled water
Concentration:	Lot specific
Buffer:	Lyophilized from PBS with 2 % sucrose
Handling Advice:	Avoid repeat freeze-thaw cycles.
Storage:	4 °C,-20 °C
Storage Comment:	Long term: -20°C, the use of 50% glycerol is recommended if storing aliquots in -20°C for long term use (up to 1 year)  Short term (less than 1 week): 4°C. Avoid freeze-thaw cycles.



**Image 1.**