



[Go to Product page](#)

Datasheet for ABIN6740606  
**anti-ZBTB26 antibody (N-Term)**

1 Image

Overview

Quantity:	100 µL
Target:	ZBTB26
Binding Specificity:	N-Term
Reactivity:	Human, Mouse, Rat, Cow, Horse, Pig, Dog, Rabbit, Bat, Monkey, Hamster
Host:	Rabbit
Clonality:	Polyclonal
Conjugate:	This ZBTB26 antibody is un-conjugated
Application:	Western Blotting (WB)

Product Details

Immunogen:	Synthetic peptide from N-Terminus of human ZBTB26 (Q9HCK0, NP_065975). Percent identity by BLAST analysis: Human, Chimpanzee, Gorilla, Gibbon, Monkey, Galago, Marmoset, Mouse, Rat, Hamster, Elephant, Panda, Dog, Bovine, Bat, Rabbit, Horse, Pig, Opossum, Platypus (100%), Turkey, Zebra finch, Chicken (92%).  Type of Immunogen: Synthetic peptide
Isotype:	IgG
Specificity:	Human ZBTB26
Predicted Reactivity:	Percent identity by BLAST analysis: Mouse, Rat, Dog, Bovine, Rabbit, Horse, Pig (100%) Chicken (92%).
Purification:	Immunoaffinity purified

## Target Details

---

Target:	ZBTB26
Alternative Name:	ZBTB26 ( <a href="#">ZBTB26 Products</a> )
Background:	Name/Gene ID: ZBTB26  Synonyms: ZBTB26, Bioref, KIAA1572, Zinc finger protein 481, Zinc finger protein 483, ZNF481, Zinc finger protein Bioref
Gene ID:	57684
NCBI Accession:	<a href="#">NP_065975</a>
UniProt:	<a href="#">Q9HCK0</a>

## Application Details

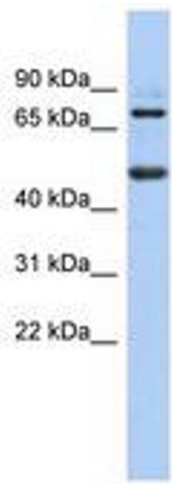
---

Application Notes:	Approved: WB (0.2 - 1 µg/mL)  Usage: Western Blot: Suggested dilution at 1 µg/mL in 5 % skim milk / PBS buffer, and HRP conjugated anti-Rabbit IgG should be diluted in 1: 50,000 - 100,000 as second antibody. ELISA titer in peptide based assay: 1:62500.
Comment:	Target Species of Antibody: Human
Restrictions:	For Research Use only

## Handling

---

Format:	Lyophilized
Reconstitution:	Distilled water
Concentration:	Lot specific
Buffer:	Lyophilized from PBS with 2 % sucrose
Handling Advice:	Avoid repeat freeze-thaw cycles.
Storage:	4 °C,-20 °C
Storage Comment:	Long term: -20°C, the use of 50% glycerol is recommended if storing aliquots in -20°C for long term use (up to 1 year)  Short term (less than 1 week): 4°C. Avoid freeze-thaw cycles.



**Image 1.**