



[Go to Product page](#)

Datasheet for ABIN6740647
anti-ZSCAN1 antibody (AA 323-372)

1 Image

Overview

| | |
|----------------------|---------------------------------------|
| Quantity: | 100 µL |
| Target: | ZSCAN1 |
| Binding Specificity: | AA 323-372 |
| Reactivity: | Human |
| Host: | Rabbit |
| Clonality: | Polyclonal |
| Conjugate: | This ZSCAN1 antibody is un-conjugated |
| Application: | Western Blotting (WB) |

Product Details

| | |
|-----------------------|--|
| Immunogen: | Synthetic peptide located between aa323-372 of human ZSCAN1 (Q8NBB4, NP_872378). Percent identity by BLAST analysis: Human, Gorilla (100%), Monkey (92%), Gibbon (91%), Marmoset (85%). Type of Immunogen: Synthetic peptide |
| Isotype: | IgG |
| Specificity: | Human ZSCAN1 |
| Predicted Reactivity: | Percent identity by BLAST analysis: Human (100%). |
| Purification: | Immunoaffinity purified |

Target Details

Target: ZSCAN1

Alternative Name: ZSCAN1 / MZF-1 ([ZSCAN1 Products](#))

Background: Name/Gene ID: ZSCAN1

Synonyms: ZSCAN1, MZF-1, Zinc finger with SCAN domain 1, ZNF915

Gene ID: 284312

NCBI Accession: [NP_872378](#)

UniProt: [Q8NBB4](#)

Application Details

Application Notes: Approved: WB (0.2 - 1 µg/mL)

Usage: Western Blot: Suggested dilution at 1 µg/mL in 5 % skim milk / PBS buffer, and HRP conjugated anti-Rabbit IgG should be diluted in 1: 50,000 - 100,000 as second antibody. ELISA titer in peptide based assay: 1:312500.

Comment: Target Species of Antibody: Human

Restrictions: For Research Use only

Handling

Format: Lyophilized

Reconstitution: Distilled water

Concentration: Lot specific

Buffer: Lyophilized from PBS with 2 % sucrose

Handling Advice: Avoid repeat freeze-thaw cycles.

Storage: 4 °C, -20 °C

Storage Comment: Long term: -20°C, the use of 50% glycerol is recommended if storing aliquots in -20°C for long term use (up to 1 year)

Short term (less than 1 week): 4°C. Avoid freeze-thaw cycles.

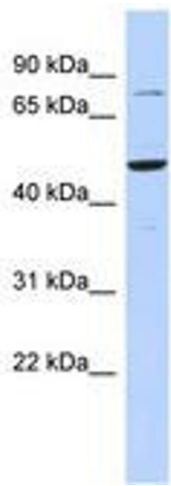


Image 1.