

Datasheet for ABIN6740660 anti-CARS antibody (AA 756-805)



[Go to Product page](#)

1 Image

Overview

Quantity:	100 µL
Target:	CARS
Binding Specificity:	AA 756-805
Reactivity:	Human, Mouse, Rat, Rabbit, Zebrafish (Danio rerio), Pig, Monkey
Host:	Rabbit
Clonality:	Polyclonal
Conjugate:	This CARS antibody is un-conjugated
Application:	Western Blotting (WB)

Product Details

Immunogen:	<p>Synthetic peptide located between aa756-805 of human CARS (Q5HYE4, NP_001014437).</p> <p>Percent identity by BLAST analysis: Human, Chimpanzee, Gorilla, Monkey, Rat (100%), Galago, Dog, Bovine, Horse, Guinea pig, Chicken, Lizard (92%), Turkey (91%), Slime mold (90%), Mouse, Drosophila (85%), Salmon, Zebrafish (84%), Xenopus, Stickleback (83%).</p> <p>Type of Immunogen: Synthetic peptide</p>
Isotype:	IgG
Specificity:	Human CARS
Predicted Reactivity:	<p>Percent identity by BLAST analysis: Human, Rat (100%) Dog, Bovine, Guinea pig, Chicken (92%)</p> <p>Mouse (85%) Zebrafish (84%).</p>
Purification:	Immunoaffinity purified

Target Details

Target:	CARS
Alternative Name:	CARS1 / CARS (CARS Products)
Background:	Name/Gene ID: CARS Synonyms: CARS, Cysteinyl-tRNA synthetase, CYSRS, Cysteine transase, CARS1, MGC:11246
Gene ID:	833
NCBI Accession:	NP_001014437
UniProt:	P49589

Application Details

Application Notes:	Approved: WB (0.2 - 1 µg/mL) Usage: Western Blot: Suggested dilution at 1 µg/mL in 5 % skim milk / PBS buffer, and HRP conjugated anti-Rabbit IgG should be diluted in 1: 50,000 - 100,000 as second antibody. ELISA titer in peptide based assay: 1:1562500.
Comment:	Target Species of Antibody: Human
Restrictions:	For Research Use only

Handling

Format:	Lyophilized
Reconstitution:	Distilled water
Concentration:	Lot specific
Buffer:	Lyophilized from PBS with 2 % sucrose
Handling Advice:	Avoid repeat freeze-thaw cycles.
Storage:	4 °C, -20 °C
Storage Comment:	Long term: -20°C, the use of 50% glycerol is recommended if storing aliquots in -20°C for long term use (up to 1 year) Short term (less than 1 week): 4°C. Avoid freeze-thaw cycles.

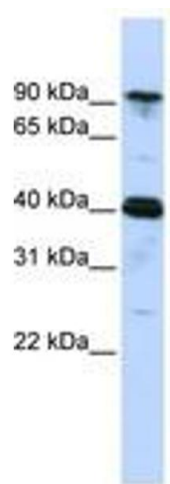


Image 1.