



[Go to Product page](#)

Datasheet for ABIN6740666
anti-NOVA1 antibody (AA 395-444)

1 Image

Overview

Quantity:	100 µL
Target:	NOVA1
Binding Specificity:	AA 395-444
Reactivity:	Human, Mouse, Rat, Rabbit, Cow, Dog, Guinea Pig, Horse, Xenopus laevis, Bat, Chicken, Monkey, Pig
Host:	Rabbit
Clonality:	Polyclonal
Conjugate:	This NOVA1 antibody is un-conjugated
Application:	Western Blotting (WB)

Product Details

Immunogen:	Synthetic peptide located between aa395-444 of human NOVA1 (A8K603, NP_002506). Percent identity by BLAST analysis: Human, Chimpanzee, Gorilla, Gibbon, Monkey, Galago, Marmoset, Mouse, Rat, Elephant, Dog, Bovine, Bat, Rabbit, Horse, Pig, Opossum, Guinea pig, Turkey, Zebra finch, Chicken, Platypus, Lizard, Xenopus (100%). Type of Immunogen: Synthetic peptide
Isotype:	IgG
Specificity:	Human NOVA1
Predicted Reactivity:	Percent identity by BLAST analysis: Human, Mouse, Rat, Dog, Bovine, Rabbit, Pig, Guinea pig, Chicken, Xenopus (100%).

Product Details

Purification: Immunoaffinity purified

Target Details

Target: NOVA1

Alternative Name: NOVA1 ([NOVA1 Products](#))

Background: Name/Gene ID: NOVA1

Synonyms: NOVA1, Nova-1, Onconeural ventral antigen 1, RNA-binding protein Nova-1, Paraneoplastic Ri antigen

Gene ID: 4857

NCBI Accession: [NP_002506](#)

UniProt: [P51513](#)

Application Details

Application Notes: Approved: WB (0.2 - 1 µg/mL)

Usage: Western Blot: Suggested dilution at 1 µg/mL in 5 % skim milk / PBS buffer, and HRP conjugated anti-Rabbit IgG should be diluted in 1: 50,000 - 100,000 as second antibody. ELISA titer in peptide based assay: 1:1562500.

Comment: Target Species of Antibody: Human

Restrictions: For Research Use only

Handling

Format: Lyophilized

Reconstitution: Distilled water

Concentration: Lot specific

Buffer: Lyophilized from PBS with 2 % sucrose

Handling Advice: Avoid repeat freeze-thaw cycles.

Storage: 4 °C, -20 °C

Storage Comment: Long term: -20°C, the use of 50% glycerol is recommended if storing aliquots in -20°C for long

Handling

term use (up to 1 year)

Short term (less than 1 week): 4°C. Avoid freeze-thaw cycles.

Images

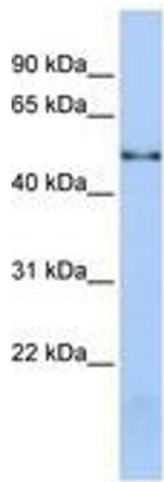


Image 1.