

## Datasheet for ABIN6740668 anti-PPP1R8 antibody (AA 215-264)



[Go to Product page](#)

### 1 Image

#### Overview

Quantity:	100 µL
Target:	PPP1R8
Binding Specificity:	AA 215-264
Reactivity:	Human, Mouse, Rat, Cow, Dog, Horse, Monkey
Host:	Rabbit
Clonality:	Polyclonal
Conjugate:	This PPP1R8 antibody is un-conjugated
Application:	Western Blotting (WB)

#### Product Details

Immunogen:	<p>Synthetic peptide located between aa215-264 of human PPP1R8 (Q12972, NP_054829).</p> <p>Percent identity by BLAST analysis: Human, Chimpanzee, Gorilla, Gibbon, Monkey, Marmoset, Panda, Dog, Bovine, Horse (100%), Elephant, Bat, Rabbit, Opossum, Guinea pig (92%), Mouse, Rat, Hamster (85%).</p> <p>Type of Immunogen: Synthetic peptide</p>
Isotype:	IgG
Specificity:	Human PPP1R8
Predicted Reactivity:	<p>Percent identity by BLAST analysis: Human, Dog, Bovine, Horse (100%) Guinea pig (92%)</p> <p>Mouse, Rat (85%).</p>
Purification:	Immunoaffinity purified

## Target Details

Target:	PPP1R8
Alternative Name:	PPP1R8 / Rnase E / ARD1 ( <a href="#">PPP1R8 Products</a> )
Background:	Name/Gene ID: PPP1R8  Synonyms: PPP1R8, ARD-1, ARD1, Activator of RNA decay, NIPP-1, NIPP1, Nuclear subunit of PP-1, PRO2047, RNase E
Gene ID:	5511
NCBI Accession:	<a href="#">NP_054829</a>
UniProt:	<a href="#">Q12972</a>

## Application Details

Application Notes:	Approved: WB (0.2 - 1 µg/mL)  Usage: Western Blot: Suggested dilution at 1 µg/mL in 5 % skim milk / PBS buffer, and HRP conjugated anti-Rabbit IgG should be diluted in 1: 50,000 - 100,000 as second antibody. ELISA titer in peptide based assay: 1:62500.
Comment:	Target Species of Antibody: Human
Restrictions:	For Research Use only

## Handling

Format:	Lyophilized
Reconstitution:	Distilled water
Concentration:	Lot specific
Buffer:	Lyophilized from PBS with 2 % sucrose
Handling Advice:	Avoid repeat freeze-thaw cycles.
Storage:	4 °C,-20 °C
Storage Comment:	Long term: -20°C, the use of 50% glycerol is recommended if storing aliquots in -20°C for long term use (up to 1 year)  Short term (less than 1 week): 4°C. Avoid freeze-thaw cycles.

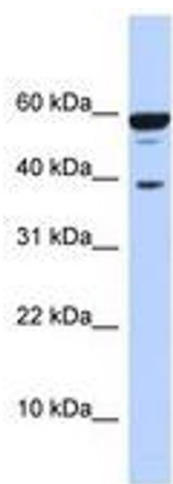


Image 1.